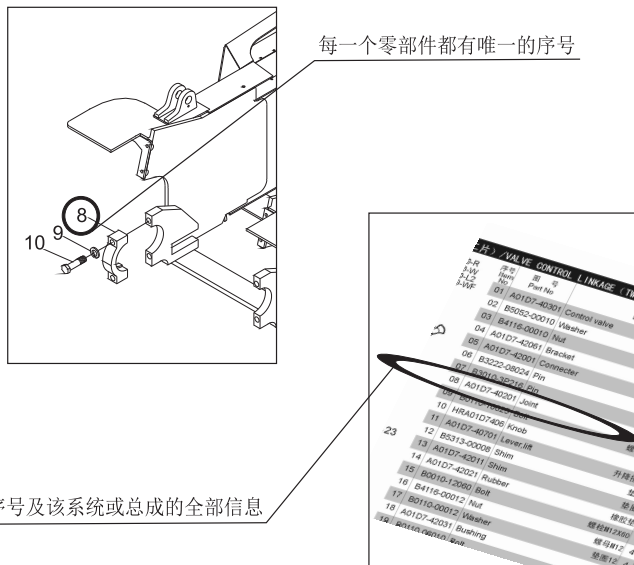


本零件目录汇集了K系列系列1~1.8内燃平衡重式叉车的零部件

查询方法

- 步骤一：在检索目录中找到系统或总成所在页次，并翻至所标页次，找到该图；
- 步骤二：在其图中找出所需零部件，以及它所标注的序号；
- 步骤三：根据这个序号，在其后附表中可以查到系统或零件的详细信息。

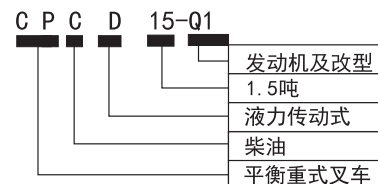


订购零部件时，务请写清叉车的型号、出厂编号、所需零部件的图号及订购数量。

在维修时，请使用正规渠道提供的本公司零部件，以确保叉车质量。

恕不能将本产品可能进行的零部件改进在本图册中同时修改，您可以从本公司的销售和配件公司获得最新资料。

叉车型号说明



缩写说明

ASS'Y	总成
R. H.	右
L. H.	左
H. P.	高压
L. P.	低压

具体车型与发动机的对应关系：

车型	发动机	备注
CPC (D) 10/15/18-QC1K	全柴4B4-45V32	
CPC (D) 10/15/18-XC1K	新柴4N23G31	
CPC (D) 10/15/18-WK	五十铃GK-C240NKFC01	

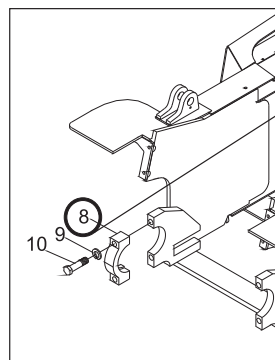
THIS PARTS CATELOGUE COVERS PARTS IN THE MOST OF 4 TON FORKLIFT TRUCKS IN H2000 SERIES

Indexing Way

Step1: Finding out the page for the system or assembly required from the indexing contents and turn to the required page, finding out the concerned drawing;

Step2: From the detail drawing, finding out the parts and their item numbers.

Step3: According to these item numbers, find out details of these parts of the system or assembly from attached table.



Every part or componet in the drawing is expressed with only item number

According to these item numbers, find out details of these parts or the system from attached table.

ITEM NO.	PART NO.	
01	A73J4-10202	转向臂轴总成 转向臂轴
02	10080-104-02	螺母 Nut
03	A73J4-12302	转向轴 Steering shaft
04	10080-114	底盘总成 Chassis ass'y
05	B1110-03004	螺栓 Bolt
06	B0710-00003	垫圈 3 Washer
07	B1010-00005	垫圈 5 Washer
08	B0710-00005	垫圈 5 Washer
09	A73J4-10301	转向臂轴总成 转向臂轴
10	B0100-00000	转向臂轴总成 转向臂轴
11	2-01904	轴承 21904 Bearing

When ordering the parts or components, please indicate the model and series number of the your forklift truck, the drawing number of parts or components you require and their quantity.

When you replace parts or components, please apply the real goods made by our company to ensure the truck's quality.

we reserve modification right without notice

Designations in the CATALOGUE

C	P	C	D	15-Q1	Engine Code
					1.5 ton capacity
					Ton-con type
					Disel
					Forklift truck

Abbreviations in the CATALOGUE

ASS'Y	assembly
R.H	right hand
L.H	left hand
H.P.	High pressure
L.P.	low pressure

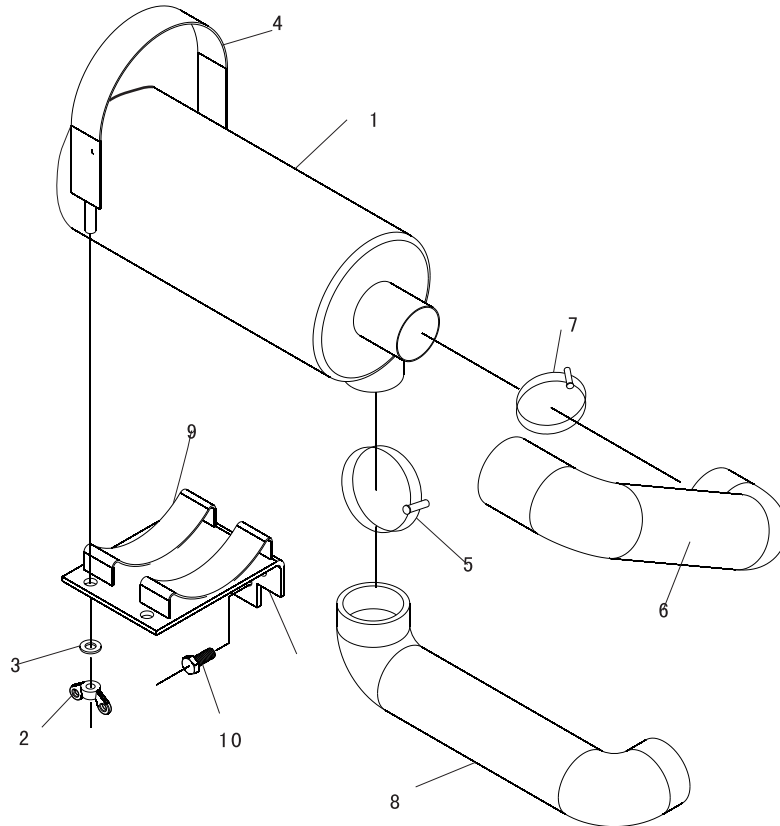
The following trucks are provided with corresponding engine

SERIES	ENGINE	REMARK
CPC (D) 10/15/18-QC1K	4B4-45V32	
CPC (D) 10/15/18-XC1K	4N23G31	
CPC (D) 10/15/18-WK	GK-C240NKFC01	

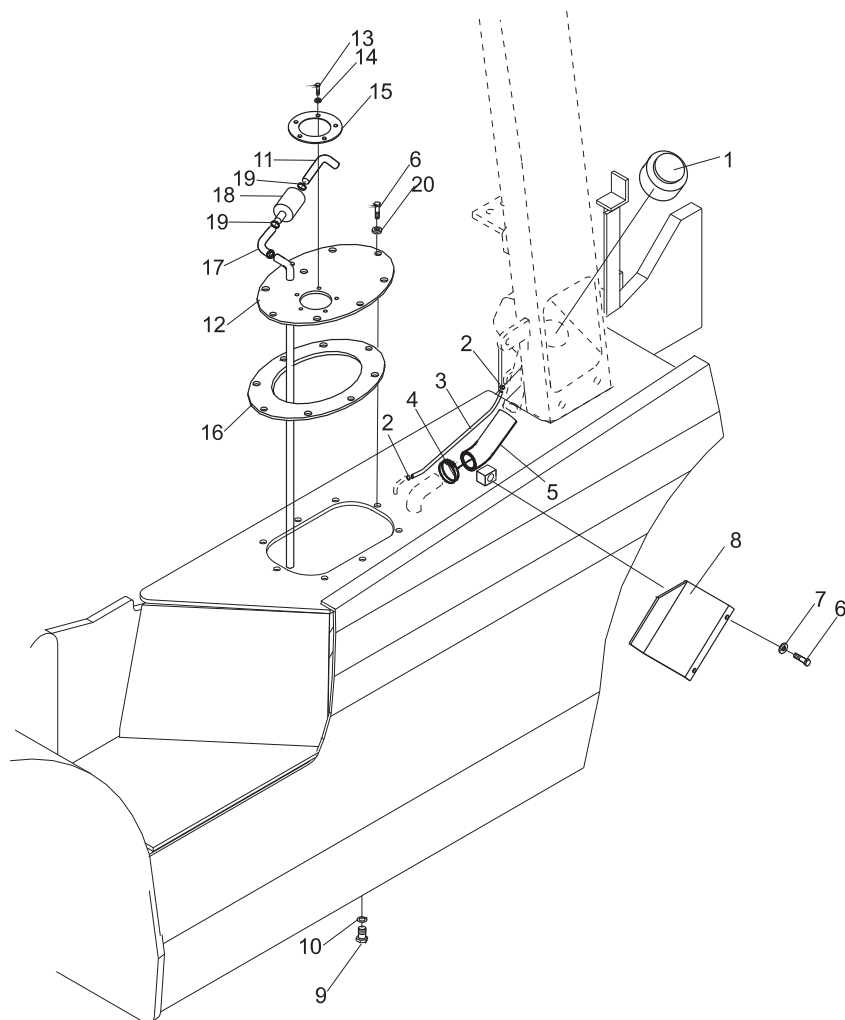
图1 发动机安装.....	1	FIG. 1 ENGINE
图2 空滤器安装.....	2	FIG. 2 AIR CLEANER ASS'Y
图3 冷却系统.....	3	FIG. 3 COLLING SYSTEM
图4 燃油系统.....	4	FIG. 4 FUEL SYSTEM
图5 燃油系统.....	5	FIG. 5 FUEL SYSTEM
图6 排气系统	6	FIG. 6 DRIVE UNIT MOUNT
图7 排气系统	7	FIG. 7 DRIVE UNIT MOUNT
图8 传动装置（机械式）	8	FIG. 8 DRIVE UNIT MOUNT
图9 传动装置（机械式）	10	FIG. 9 DRIVE UNIT MOUNT
图10 传动装置（液力式）	11	FIG. 10 DRIVE UNIT MOUNT
图11 传动装置（液力式）	12	FIG. 11 DRIVE UNIT MOUNT
图12 传动装置（液力式）	14	FIG. 12 DRIVE UNIT MOUNT
图13 传动装置（盖和微动阀机液控制）	16	FIG. 13 DRIVE UNIT MOUNT
图14 传动装置（液力式）	18	FIG. 14 DRIVE UNIT MOUNT
图15 传动装置（机械式）	19	FIG. 15 DRIVE UNIT MOUNT
图16 驱动桥	20	FIG. 16 DRIVE AXLE
图17 驱动轮	22	FIG. 17 DRIVE WHEEL
图18 转向系统	23	FIG. 18 STEERING SYSTEM
图19 横置油缸转向桥	25	FIG. 19 STEERING AXLE
图20 转向轮	27	FIG. 20 STEERING WHEEL
图21 门架管路系统	28	FIG. 21 HYDRAUL IS SYSTEM MAST
图22 货叉与货叉架	30	FIG. 22 FORK & LIFT BRACKET
图23 门架	32	FIG. 23 MAST
图24 起升油缸	36	FIG. 24 LIFT CYLINDER
图25 倾斜油缸	40	FIG. 25 TILT CYLINDER
图26 限速阀	42	FIG. 26 FLOW REGULATOR

图27 车架与平衡重	43	FIG. 27 FRAME & COUNTER WEIGHT
图28 机罩、底板及座椅	44	FIG. 28 HOOD、FLOOR BOARD & SEAT
图29 液压油箱	47	FIG. 29 HYDRAULIC OIL TANK
图30 油门及熄火操纵	48	FIG. 30 ACCELERATOR PEDAL
图31 油门操纵	49	FIG. 31 ACCELERATOR
图32 变矩器油冷系统	50	FIG. 32 TOR-CON OIL COOLING SYSTEM
图33 行车制动与离合操纵	51	FIG. 33 BRAKE & CLUTCH CONTROL
图34 行车制动与微动操纵	53	FIG. 34 BRAKE & INCHING CONTROL
图35 停车制动装置	55	FIG. 35 BRAKE LEVER
图36 阀操纵总成(两片)	56	FIG. 36 VALVE CONTROL LINKAGE(TWO-THROW)
图37 阀操纵总成(三片)	57	FIG. 37 VALVE CONTROL LINKAGE(THREE-THROW)
图38 阀操纵总成(四片)	58	FIG. 38 VALVE CONTROL LINKAGE(FOUR-THROW)
图39 阀操纵总成(五片)	59	FIG. 39 VALVE CONTROL LINKAGE(FIVE-THROW)
图40 液压系统	60	FIG. 40 HYDRAULIC SYSTEM
图41 护顶架	63	FIG. 41 OVERHEAD GUARD
图42 标牌	64	FIG. 42 DECAL
图43 电气系统	65	FIG. 43 ELECTRIC SYSTEM

图2/FIG2

[illegible]

CPC(D) 10/15/18-XC1K/QC1K



序号 Item No	图 号 Part No	零部件名称 Description	件数 Q'ty	备 注 Remark
01	23452-22201	Cap 加油盖	1	
02	Z4590-00017	Clip 双钢丝紧箍 $\phi 17$	2	JB/ZQ3776-86
03	Z7300-10040	Tube 胶管 $\phi 13 \times 400$	1	HG4-548-67
04	Z4590-00062	Clip 双钢丝紧箍 $\phi 62$	2	JB/ZQ3776-86
05	KM912-12041	Hose 加油胶管	1	
06	B0330-08020	Bolt 螺栓 M8x20	8	GB5783-86
07	B5050-00008	Washer 垫圈 8	8	GB93-87
08	22197-52081	Plug, drain 放油螺塞	1	
09	Z6700-03027	Washer 垫圈 30	1	JB982-77
10	Z7300-10120	Tube 输油胶管 $10 \times 17 \times 1200$	2	HG4-548-67
11	Z4590-00017	Clip 双钢丝紧箍 $\phi 17$	8	JB/ZQ3776-86
12	Z7300-10140	Tube 输油胶管 $10 \times 17 \times 1200$	1	HG4-548-67
13	B0330-05012	Bolt 螺栓 M5x12	5	GB5783-86
14	B5050-00005	Washer 垫圈 5	5	GB93-87
15	23642-20042G	Shim 垫	1	
16	K87A2-20201	Plate 盖板总成	1	
17	K87A6-22011	Packing 盖板垫	1	
18	22492-42091G	Clip 电瓶引线卡	2	
19	A22A2-20701	Sedimentor 滤油器	1	

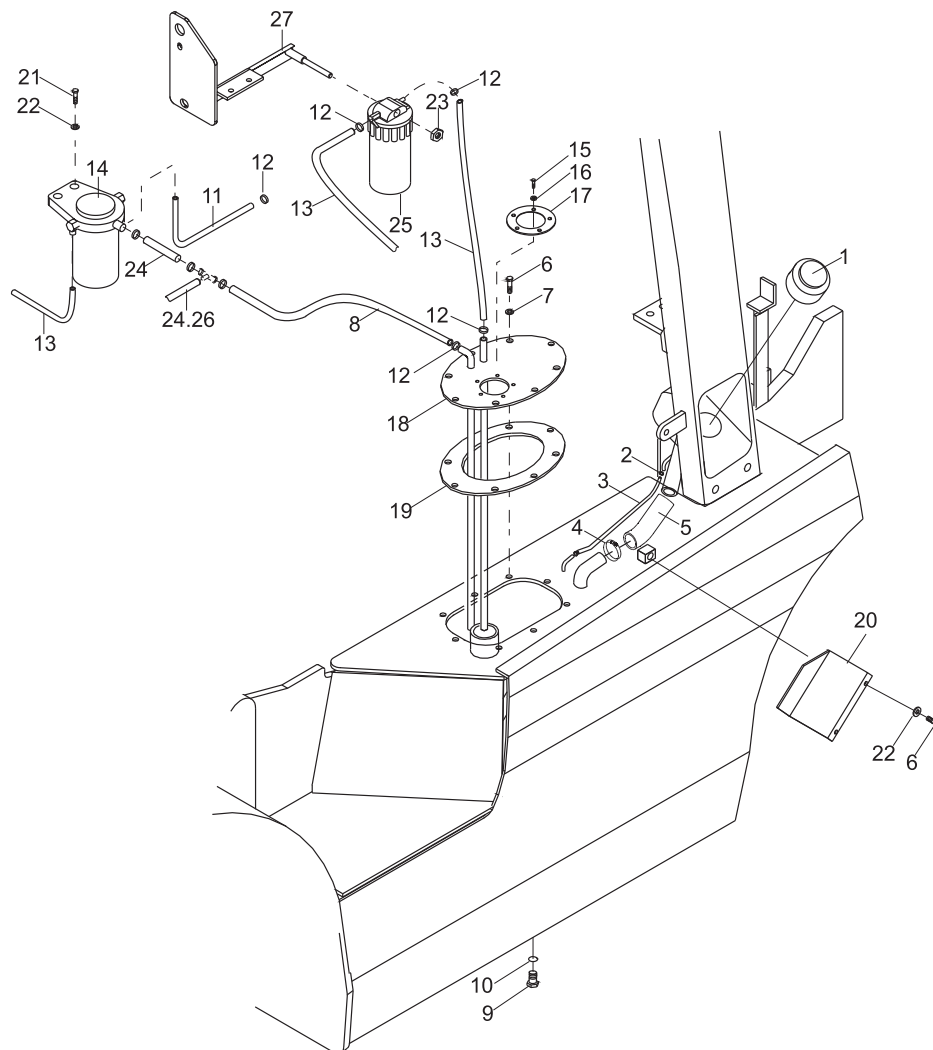
图5/FIG5

燃油系统/FUEL SYSTEM

A

序号 Item No	图 号 Part No	零部件名称 Description	件数 Q'ty	备 注 Remark
A	H13C2-20001	燃油系统	1	
01	23452-22201	加油盖	1	
02	Z4590-00019	双钢丝卡箍 $\varnothing 19$	2	
03	Z7300-13026	胶管 $\varnothing 13 \times 260$	1	
04	Z4590-00065	双钢丝卡箍 $\varnothing 65$	2	
05	A24F2-22001	加油胶管	1	
06	B0330-08020	螺栓M8X20	12	GB5783-86
07	B5050-00008	Washer, lock	14	GB93-87
08	H24C2-22011	后挡板	1	
09	22197-52081	放油螺塞	1	
10	Z6700-03027	Washer	1	JB982-77
11	Z7300-08036	燃油管 $\varnothing 8 \times 13 \times 360$	2	
12	Z4710-00010	钢带型环箍	8	QC/T621-1997
13	Z7300-08026	胶管 $\varnothing 8 \times 13 \times 260$	1	
14	24662-22032	燃油滤清器	1	
15	Z7300-06033	胶管 $\varnothing 6 \times 13 \times 330$	1	
16	B0330-05012	螺栓M5X12	5	GB5783-86
17	B5050-00005	Washer, lock	5	GB93-87
18	Z3642-20042G	垫圈	1	
19	H13C2-20201	Cover, tank	1	
20	H12C7-52021	Gasket	1	
21	H25S2-23011	Sedimentor	1	
22	Z7300-08027	Hose	1	
23	B0330-08025	Bolt	2	GB5783-86
24	Z6701-00827	Washer	8	GB982-77
25	G1D72-22001	支架	1	CPC(D)10-18-WS2
-	G2E52-22001	支架	1	CPC(D)10-18-WS1

CPC(D)10/15/18-WK



HELI

图6/FIG6

序号
Item
No

图号
Part No

零部件名称
Description

件数	Q'ty
----	------

备注
Remark

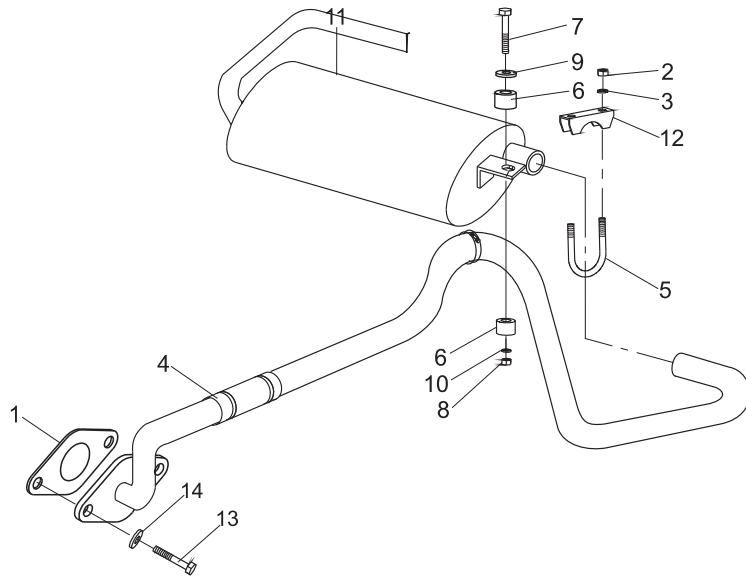
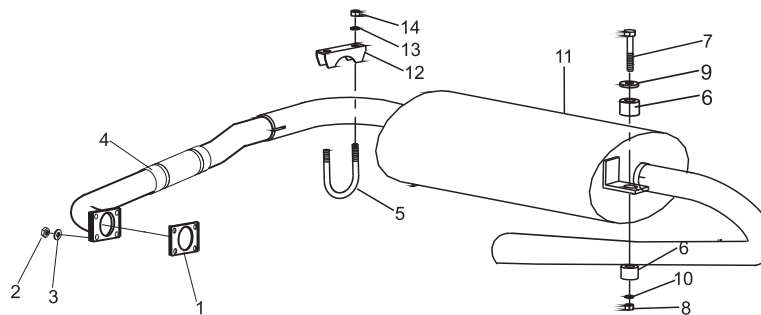
[illegible]

图7/FIG7

排气系统/FUEL SYSTEM

序号 Item No	零件名称 Description	件数 Q'ty	备注 Remark
A		1	
01	25592-32011 Packing 垫片	1	
02	B4413-00010 Nut 螺母M8x1.25	2	
03	B5050-00010 Washer, lock 垫圈	1	
04	K11B2-30101 Pipe ASSY 前排气管总成	2	
05	21191-03120G U-clamp 卡轴	1	
06	22252-32241 Rubber 橡胶垫	12	c
07	A22A2-32021 Bolt 螺栓	14	
08	B4017-00008 Nut 螺母M8	1	
09	22252-32251 Shim 垫片	1	
10	B5050-00010 Washer, lock 垫圈10	1	
11	K11B2-30301 Muffler 消音器总成	2	
12	21191-03110G Stopper 卡板	8	
13	B5050-00008 Washer, lock 垫圈8	1	
14	B4116-00008 Nut 螺母M8	1	
15		1	
16		5	
17		5	
18		1	
19		1	
20		1	
21		1	
22		1	
23		2	
24		8	
25		1	
-		1	

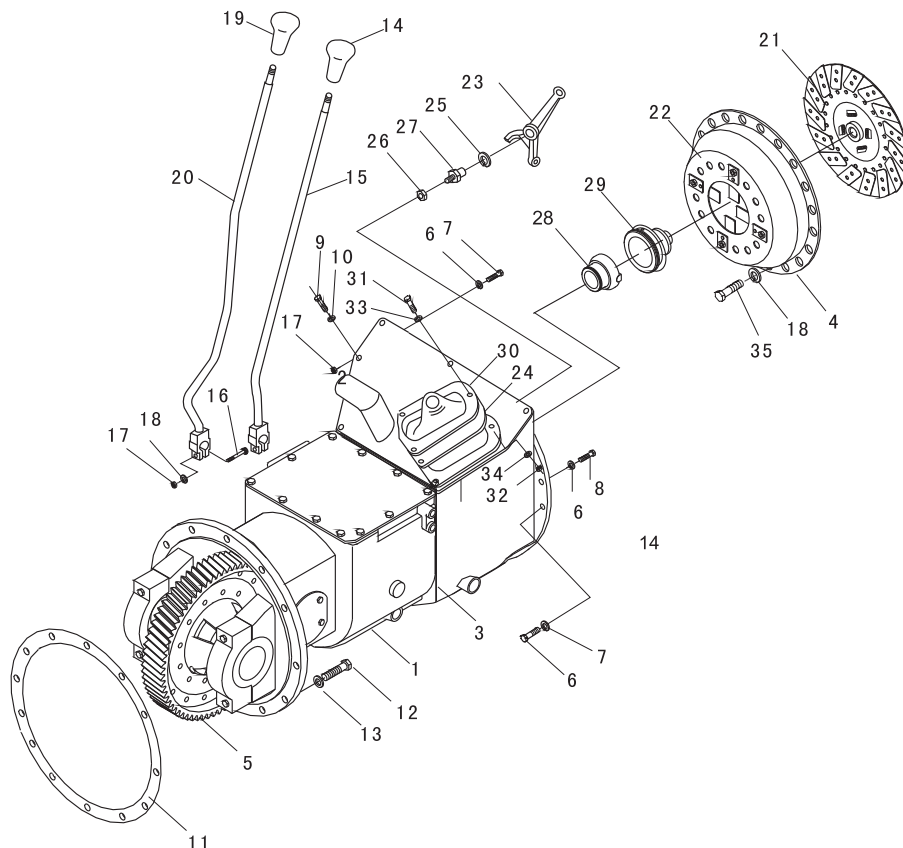
CPC(D) 10/15/18-WK



传动装置(机械式)/DRIVE UNIT MOUNT (CLUTCH TYPE)

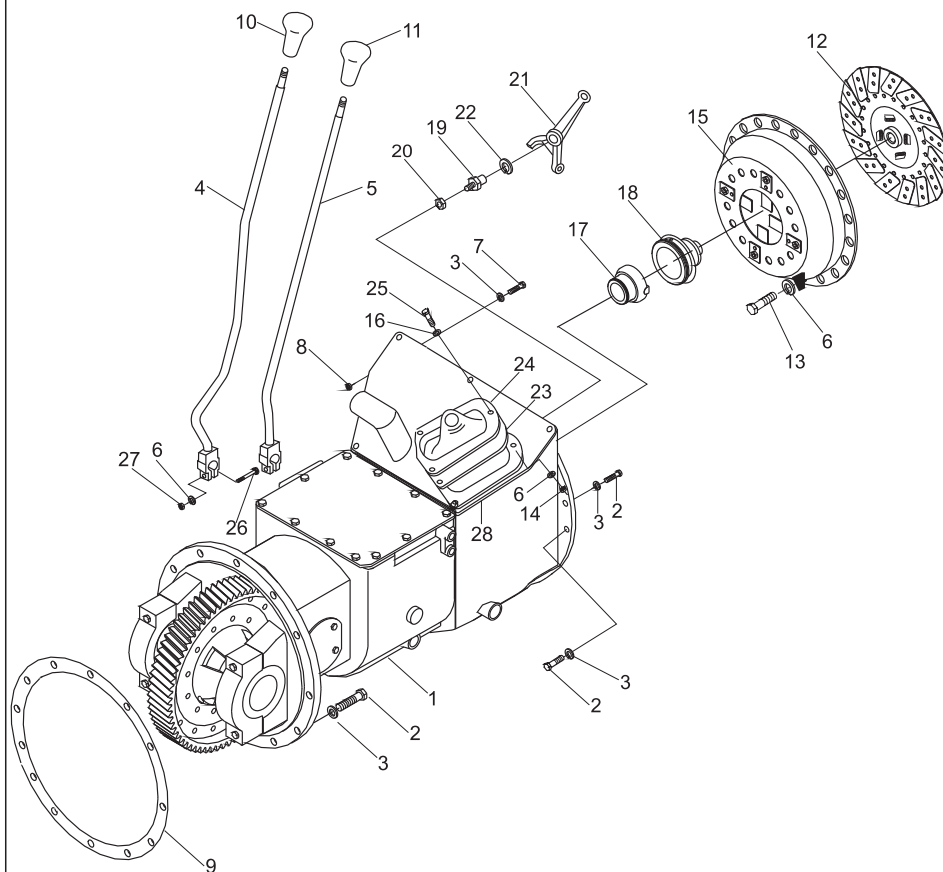
图8/F I G 8

CPC (D) 10/15/18-XC1K/QC1K



序号 Item No	图 号 Part No	零部件名称 Description	件数 Q'ty	备 注 Remark
01	JDS1811	Transmission 机械变速箱总成	1	外购浙江中柴
02	J30H-07007A	Cover 离合器盖	1	
03	J30H-07001	Clutch housing 离合器壳	1	
04	J30H-07002	Shim 垫片	1	
05	YQX25	Reduction & diferentic 减速器与差速器总成	1	
06	B5050-00010	Washer 垫圈10	16	GB93-87
07	B0110-10030	Bolt 螺栓M10X30	9	GB5781-86
08	B0330-10030	Bolt 螺栓M10X30	9	GB5783-86
09	B0330-06016	Bolt 螺栓M6X16	4	GB5783-86
10	B5050-00006	Washer 垫圈6	4	GB93-87
11	24452-52001	Shim 垫片	1	
12	B0530-12040	Bolt 螺栓M12X1.25X40	12	GB5786-86
13	B5050-00012	Washer 垫圈12	12	GB93-87
14	A22A2-52001	Knob 换向手柄头	1	
15	A22A2-50301	Lever 手柄杆	1	
16	B0330-08035	Bolt 螺栓M8X35	2	GB5783-86
17	B4123-00008	Nut 螺母M8	2	GB6170-86
18	B5050-00008	Washer 垫圈8	2	GB93-87
19	A22A2-52021	Knob 变速手柄头	1	
20	A22A2-50501	Lever 手柄杆	1	
21	J30H-07500	Clutch disc Ass'y 离合器磨擦片总成	1	
22	J30H-07200	Clutch, cover 离合器压盘及盖总成	1	
23	J30H-07003	Yoke, clutch 拨叉	1	
24	13453-12052	Cover dust 分离叉护罩	1	
25	J30H-07005	Snap, ring 挡圈	1	
26	B4223-00012	Nut 螺母M12X1.25	1	
27	13073-12001	Pivot, clutch yoke 支撑螺栓	1	
28	J30H-07004	Clutch cover 分离轴承套筒	1	
29	9688211	Bearing, thrust 分离轴承	1	
30	J30H-07009	Retainer, cover 压板	1	

CPC(D)10/15/18-WK

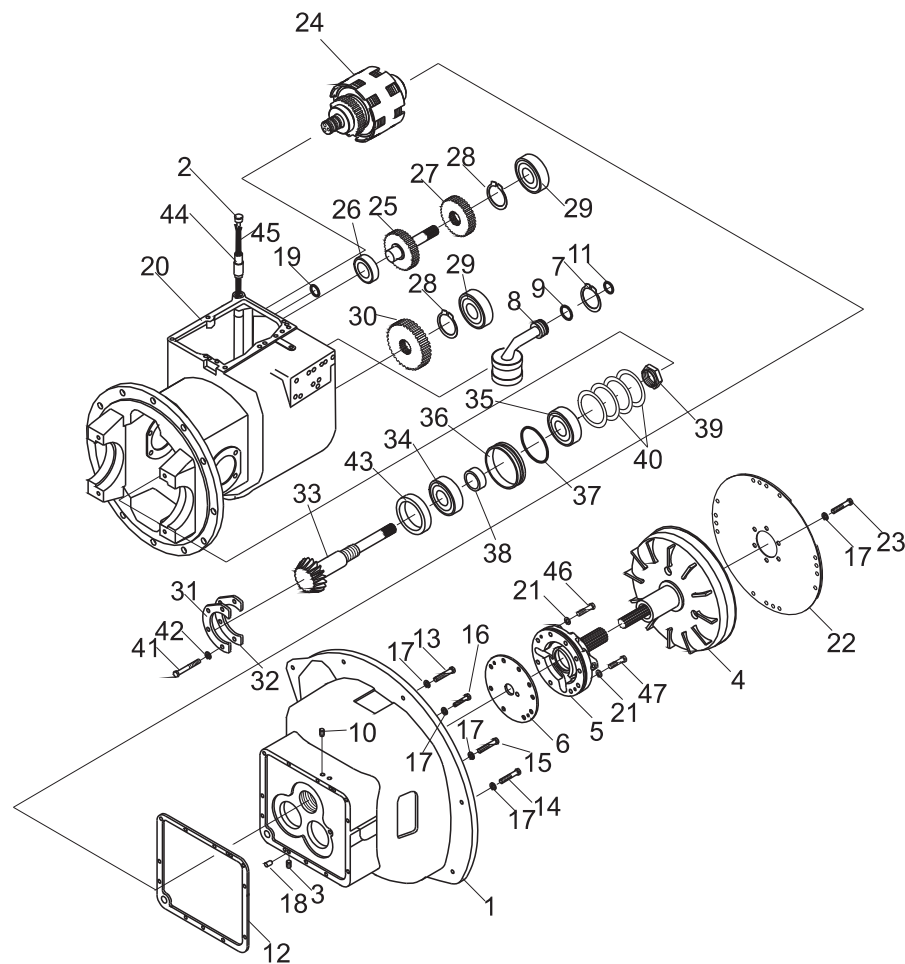


序号 Item No	图 号 Part No	Description	Q'ty	Remark
01	HRH24C3401 H24C3-40301	Drive unit 机械变速箱总成	1	集团公司
02	B0530-10035	Bolt 螺栓M10X1.25X35	12	GB5786-86
03	B5050-00010	Washer, lock 垫圈10	27	GB93-87
04	A12A2-50211	Lever, speed change 手柄杆	1	
05	A12A2-50311	Lever, direction change 手柄杆	1	
06	B5050-00008	Washer, lock 垫圈8	16	GB93-87
07	B0230-10050	Bolt 螺栓M10X50	8	GB5782-86 CPC-WK
-	B0230-10055	Bolt 螺栓M10X55	8	GB5782-86 CPC10-18-Ku6,Ku11
08	B4123-00010	Nut 螺母M10	8	GB6170-86
09	25592-52001	Packing 垫片	1	
10	A22A2-52002	Knob,direction 换向手柄头	1	
11	A22A2-52022	Knob,speed 变速手柄头	1	
12	129F3-12041	Clutch disc Ass'y 离合器摩擦片总成	1	
13	B0330-08020	Bolt 螺栓M8X20	12	GB5783-86
14	B4610-00008	Nut 螺母M8	2	GB41-86
15	13553-10301A	Clutch cover 离合器压盘及盖总成	1	
16	B5310-00008	Washer 垫圈8	2	GB97.1-85
17	13453-12021G	Retainer, bearing 分离轴承套筒	1	
18	Z-9688211	Bearing,thrust 分离轴承9688211	1	
19	H24C3-12601	Pivot,clutch yoke 支撑螺栓	1	
20	B4216-00012	Nut 螺母M12X1.25	1	GB6171-86
21	10113-10122	Yoke, clutch 分离叉	1	
22	10113-10081	Snap ring 弹性挡圈	1	
23	13453-12052	Cover dust 分离叉护罩	1	
24	13453-12062	Retainer,cover 压板	1	
25	B0110-08016	Bolt 螺栓M8H16	2	GB5781-86
26	B0212-08035	Bolt 螺栓M8H35	2	GB5782-86
27	B4115-00008	Nut 螺母M8	2	GB6170-86
28	H24C3-43001	Rubber 橡胶垫	1	

传动装置(液力式)/DRIVE UNIT(TOR-CON TYPE)

图11/FIG11

CPCD10、15、18WK



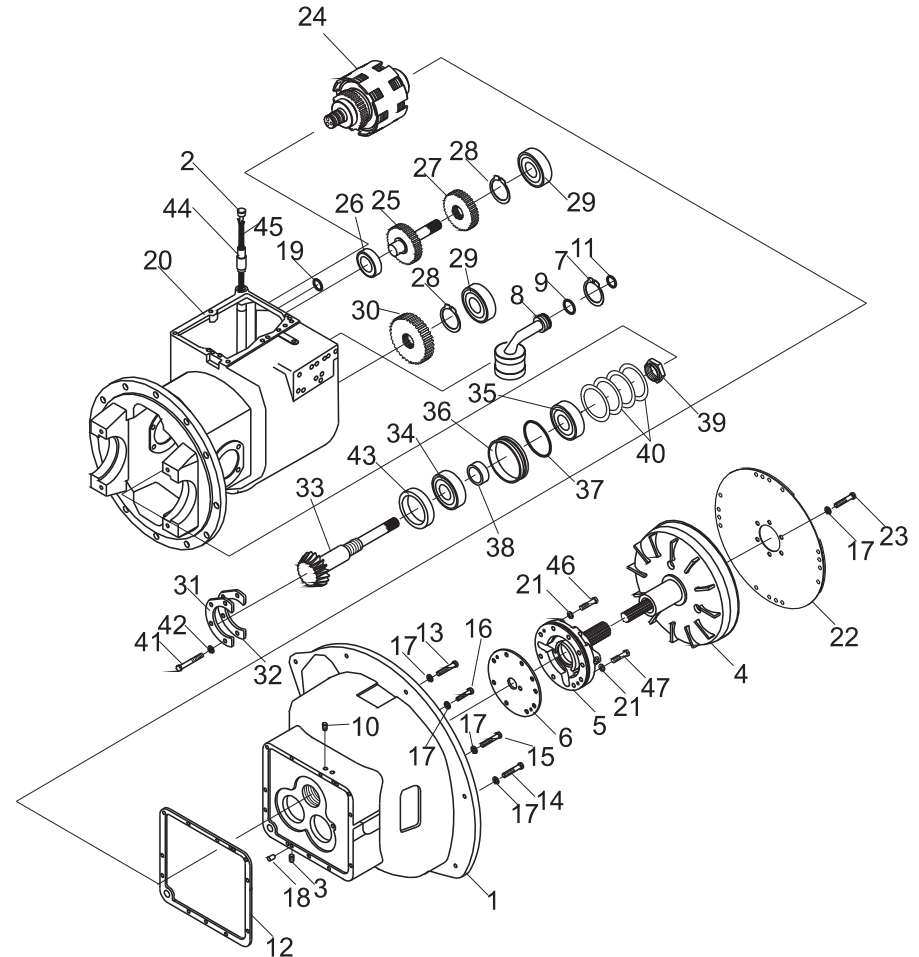
序号 Item No	图 号 Part No	版本 Edition	零部件名称 Description		件数 Q'ty	备 注 Remark
01	H25S3-82001	00	Case, tor-con	变矩器壳体	1	CPCD10-18-WK CPCD10-18-Ku11
-	15583-82511	D04	Case, tor-con	变矩器壳体	1	CPCD10-18-Rc,Rc1,Rc4 CPCD10-18-HJ,HJ2
02	12163-82232	00	Cap	加油口盖	1	
03	H25S3-84001	01	Plug	螺塞总成	1	
04	H25S3-20001	01	Tor-con ass'y	变矩器总成	1	CPCD10-18-WK CPCD10-18-Ku11
-	12163-80301G	00	Tor-con ass'y	变矩器总成	1	CPCD10-18-Rc,Rc1,Rc4 CPCD10-18-HJ,HJ2
05	15583-80221	02	Charging pump ass'y	供油泵总成	1	See Fig.35
06	15583-82201	00	Gasket	垫片	1	
07	B6150-00035	00	Snap ring	挡圈35	1	GB894.1-86
08	12163-82531	00	Strainer	滤油器 (I)	1	
09	Z6003-03503	00	O-ring	O形圈35X3.1	1	GB1235-76
10	Q/Z285-2	D00	Plug	螺塞1/4"	2	
11	Z6004-02804	00	O-ring	O形圈28X3.5	1	GB1235-76
12	11243-82501	00	Gasket	垫片	1	
13	B0330-10075	00	Bolt	螺栓M10X75	1	GB5783-86
14	B0330-10055	00	Bolt	螺栓M10X55	3	GB5783-86
15	B0330-10050	00	Bolt	螺栓M10X50	1	GB5783-86
16	B0330-10030	00	Bolt	螺栓M10X30	4	GB5783-86
17	B5050-00010	00	Washer,lock	垫圈10	15	GB93-87
18	B3120-12020	00	Pin	销B12X20	2	GB119-76
19	Z6004-01502	00	O-ring	O形圈15X2.4	1	GB1235-76
20	15583-82591	D05	Case, mission	衬垫	1	
21	12163-82561	00	Gasket	弹性板	6	
22	13683-82021	00	Plate	螺栓M10X1.25X16	1	GB5786-86
23	12163-82801	D00	Bolt	锁片	6	
24	21182-52001	D01	Clutch, hydraulic	离合器总成	1	See Fig.36
25	12163-42201	00	Shaft, idler	惰轮轴	1	
26	Z-6206-2RS	00	Bearing	轴承6206-2RS	1	GB/T276-94
27	12163-42211	00	Gear, idler	惰轮	1	
28	B6050-00024	00	Snap ring	挡圈24	2	GB893.1-86

图11/FIG11

传动装置(液力式)/DRIVE UNIT (TOR-CON TYPE)

序号 Item No	图 号 Part No	版本 Edition	零部件名称 Description	件数 Q'ty	备 注 Remark
29	Z-6207	00	Bearing 轴承6207	2	GB/T276-94
30	12163-42231	00	Gear, output 输出齿轮	1	
31	12163-82151	00	Plate, bearing support 支撑片	1	
32	12163-82571	00	Shim 支承片	AR	
-	12163-82581	00	Shim 支承片	AR	
-	12163-82591	00	Shim 支承片	AR	
33	14243-82011	D01	Shaft, output 输出轴	1	
34	Z-32208	00	Bearing 轴承32208	2	GB/T297-94
35	Z-30208	00	Bearing 轴承30208	1	GB/T297-94
36	12163-82121	00	Retainer, oil seal 油封保持架	1	
37	Z6003-08003	00	O-ring 0形圈80X3.1	1	GB1235-76
38	12163-82131	00	Seal, oil 油封	1	
39	11243-82621	00	Nut 螺母	1	
40	12163-82501	00	Shim 垫	AR	
-	12163-82511	00	Shim 垫	AR	
-	12163-82521	D00	Shim 垫	AR	
-	12163-82551	D00	Shim 垫	AR	
41	B0330-08020	00	Bolt 螺栓M8X20	4	GB5783-86
42	B5050-00008	00	Washer,lock 垫圈8	4	GB93-87
43	12163-82191	00	Collar 轴环	1	
44	12163-82221	00	Pipe oil fill 加油管	1	
45	12163-82421	00	Gasket 衬垫	1	
46	B0330-08045	00	Bolt 螺栓M8X45	4	GB5783-86
47	B0330-08035	00	Bolt 螺栓M8X35	2	GB5783-86

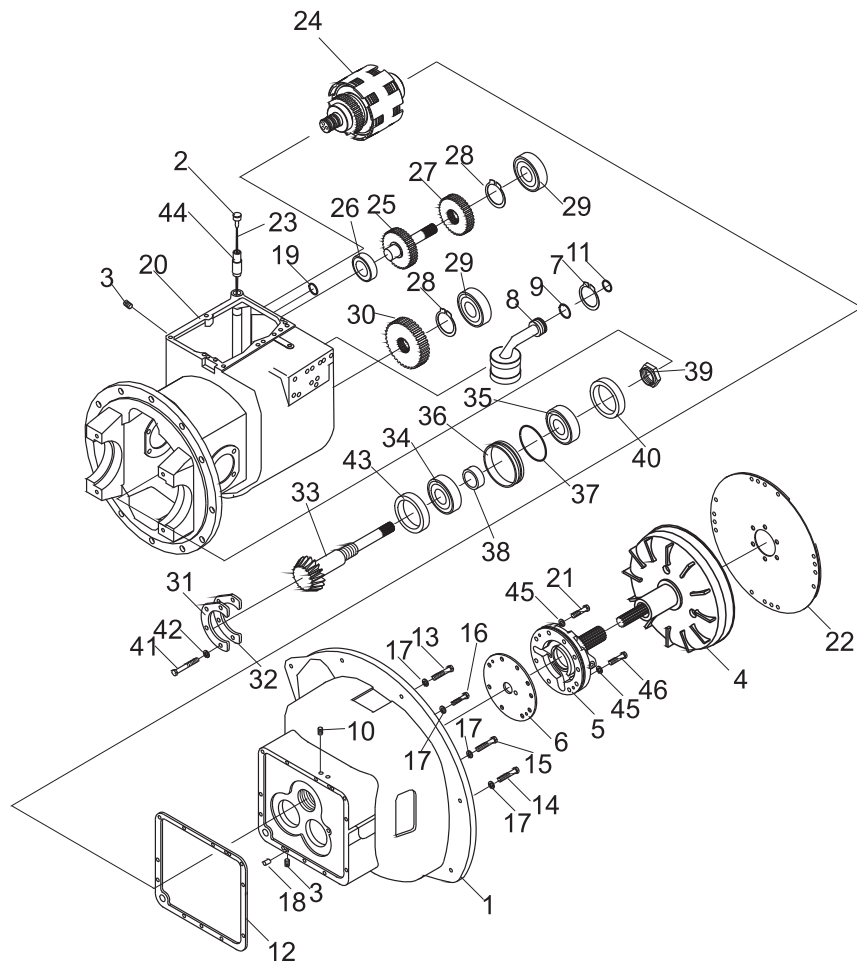
CPCD10,15,18-WK



传动装置(液力式)/DRIVE UNIT (TOR-CON TYPE)

图12/FIG12

CPCD10、15、18-XC1K, QC1K



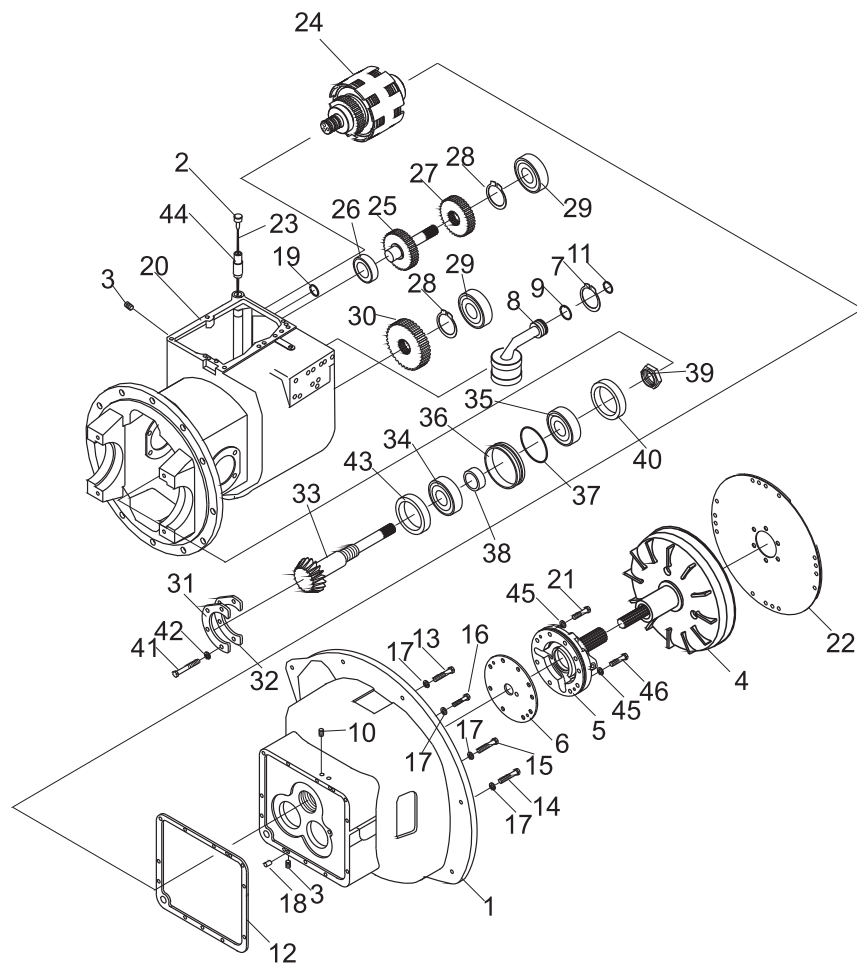
序号 Item No	图 号 Part No	版本 Edition	零部件名称 Description	件数 Q'ty	备 注 Remark
A	A81B3-80301	D00	Transmission case ass'y 液力变速箱总成	1	
01	22502-52113G	00	Case, tor-con 变矩器壳体	1	
02	12163-82232	D.2	Cap 加油口盖	1	
03	H25S3-84001	01	Plug 螺塞总成	1	
04	12163-80301G	00	Tor-con 变矩器	1	
05	15583-80221	02	Charging pump ass'y 供油泵总成	1	See Fig.35
06	15583-82201	00	Gasket 垫片	1	
07	B6150-00035	00	Snap ring 挡圈35	1	GB894-86
08	12163-82531	00	Strainer 滤油器(I)	1	
09	Z6004-03503	00	O-ring 0形圈35X3.1	1	GB1235-76
10	G0121-00011	D00	Plug 内六角螺塞1/4"	2	Q/ZB85-2
11	Z6004-02804	00	O-ring 0形圈28X3.5	1	GB1235-76
12	11243-82501	00	Gasket 垫片	1	
13	B0330-10080	00	Bolt 螺栓M10X80	1	GB5783-86
14	B0330-10055	00	Bolt 螺栓M10X55	3	GB5783-86
15	B0330-10050	00	Bolt 螺栓M10X50	1	GB5783-86
16	B0330-10030	00	Bolt 螺栓M10X30	4	GB5783-86
17	B5050-00010	00	Washer, lock 垫圈10	8	GB93-87
18	B3120-12020	00	Pin 销B12X20	2	GB119-76
19	Z6004-01502	00	O-ring 0形圈15X2.4	1	GB1235-76
20	15583-82591	D05	Case, mission 壳体	1	
21	B0330-08045	00	Bolt 螺栓M8X45	4	GB5783-86
22	13683-82021	00	Plate 弹性板	1	
23	12163-82421	00	Gasket 衬垫	1	
24	21182-52001	D01	Clutch, hydraulic 离合器总成	1	See Fig.36
25	12163-42201	00	Shaft, idler 惰轮轴	1	
26	Z-6206-2RS	00	Bearing 轴承6206-2RS	1	GB/T276-94
27	12163-42211	00	Gear, idler 惰轮	1	
28	B6050-00024	00	Snap ring 挡圈24	2	GB893.1-86
29	Z-6207	00	Bearing 轴承6207	2	GB/T276-94

图12/FIG12

传动装置(液力式)/DRIVE UNIT (TOR-CON TYPE)

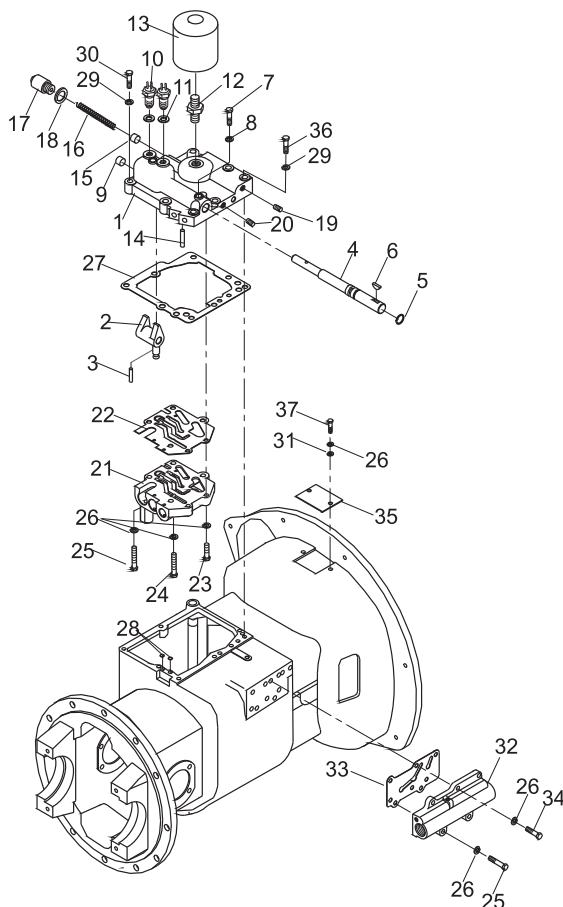
序号 Item No	图 号 Part No	版本 Edition	零部件名称 Description	件数 Q'ty	备 注 Remark
30	12163-42231	00	Gear, output 输出齿轮	1	
31	12163-82151	00	Plate, bearing support 支撑片	1	
32	12163-82571	00	Shim 支承片	AR	
-	12163-82581	00	Shim 支承片	AR	
-	12163-82591	00	Shim 支承片	AR	
33	14243-82011	D01	Shaft, output 输出轴	1	
34	Z-32208	00	Bearing 轴承32208	2	GB/T297-94
35	Z-30208	00	Bearing 轴承30208	1	GB/T297-94
36	12163-82121	00	Retainer, oil seal 油封保持架	1	
37	Z6003-08003	00	O-ring 0形圈80X3.1	1	GB1235-76
38	12163-82131	00	Seal, oil 油封	1	
39	11243-82621	00	Nut 锁紧螺母	1	
40	12163-82501	00	Shim 垫	AR	
-	12163-82511	00	Shim 垫	AR	
-	12163-82521	D00	Shim 垫	AR	
-	12163-82551	D00	Shim 垫	AR	
41	B0330-08020	00	Bolt 螺栓M8X20	4	GB5783-86
42	B5050-00008	00	Washer, lock 垫圈8	4	GB93-87
43	12163-82191	00	Collar 轴环	1	
44	12163-82221	00	Pipe 加油管	1	
45	12163-82561	00	Gasket 衬垫	7	
46	B0330-08035	00	Bolt 螺栓M8X35	2	GB5783-86

CPCD10、15、18-XC1K, QC1K



传动装置(盖和微动阀 机液控制)/DRIVE UNIT (COVER & INCHING VALVE MACHINE-HYDRAULIC) 图13/FIG13

CPCD,CPQD10,15,18

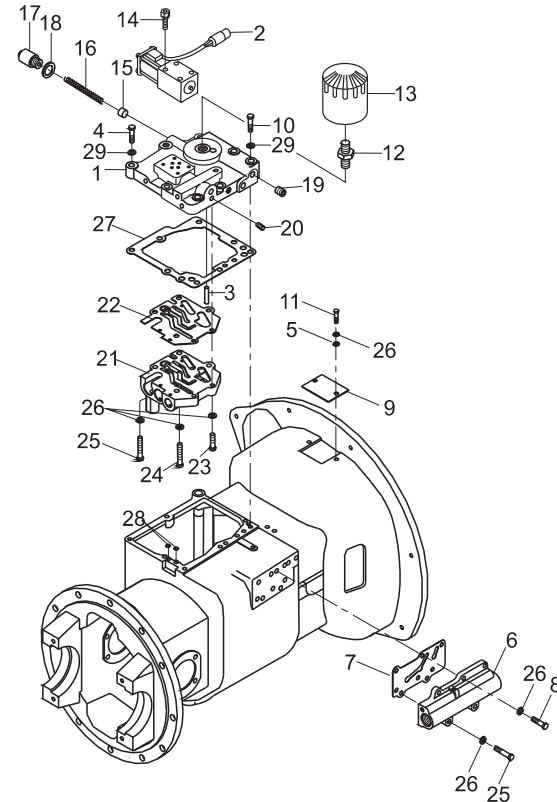


序号 Item No	图号 Part No	版本 Edition	零部件名称 Description	件数 Q'ty	备注 Remark
01	11243-82272	00	Cover, case	壳体盖	1
02	11243-82291	D00	Arm, shift	变速臂	1
03	B3352-06032	00	Pin, lock	销6X32	1 GB879-86
04	11243-82281	D00	Shaft, shift arm	变速臂轴	1
05	Z6004-02002	00	O-ring	O形圈20X2.4	1 GB1235-76
06	B4000-05019	D00	Key, woodruf	半圆键5X19	1 GB1099-79
07	12163-82291	D00	Bolt	螺栓	1
08	12163-82561	00	Shim	衬垫	7
09	12163-82431	00	Plug	塞子	1
10	12003-42451	01	Switch	倒车档开关	2
11	12003-42461	01	Shim	衬垫	2
12	12163-82311	00	Nipple	管接头	1
13	12163-82301	00	Filter, oil	滤油器	1
14	B3352-04026	00	Pin, lock	销4X26	1 GB879-86
15	12163-82321	00	Piston	活塞	1
16	12163-82331	00	Spring	弹簧	1
17	12163-82341	00	Cup	安全阀盖	1
18	12163-82421	00	Packing, copper	衬垫	1
19	G0121-00021	D00	Plug	螺塞1/8"	6
20	G0121-00011	D00	Plug	螺塞1/4"	4
21	HRH25S3802 15583-80211	D00	Control ass'y	控制阀总成	1 See Fig.37 选用件 Option
22	15583-82483	00	Gasket	垫片	1
23	B0330-08035	00	Bolt	螺栓M8X35	2 GB5783-86
24	B0330-08055	00	Bolt	螺栓M8X55	2 GB5783-86
25	B0330-08050	00	Bolt	螺栓M8X50	4 GB5783-86
26	B5050-00008	00	Washer,lock	垫圈8	11 GB93-87
27	11243-82531	00	Gasket	垫片	1
28	Z6003-00901	00	O-ring	O形圈9X1.9	2 GB1235-76
29	B5050-00010	00	Washer,lock	垫圈10	8 GB93-87
30	B0330-10055	00	Bolt	螺栓M8X55	2 GB5783-86
31	B5310-00008	00	Washer	垫圈8	2 GB97.1-85
32	15583-80202	00	Inching value ass'y	微动阀总成	1 See Fig.38
33	15583-82081	00	Shim	衬垫	1
34	B0330-08025	00	Bolt	螺栓M8X25	3 GB5783-86
35	15583-83611	00	Cover, tor-con	变距器盖	1
36	B0330-10040	00	Bolt	螺栓M10X40	6 GB5783-86
37	B0330-08012	00	Bolt	螺栓M8X12	2 GB5783-86

图13/FIG13传动装置(盖和微动阀 电液控制)/DRIVE UNIT(COVER & INCHING VALVE ELECTRIC-HYDRAULIC)

序号 Item No	图 号 Part No	版本 Edition	零部件名称 Description	件数 Q'ty	备 注 Remark
01	116H3-82301	D00	Cover, case 壳体盖	1	
02	34E-10BY-12	D00	Valve,solenoid 电磁阀	1	
03	115G3-82141	D00	Pin 销	1	
04	B0330-10055	00	Bolt 螺栓M10X55	2	GB5783-86
05	B5310-00008	00	Washer 垫圈8	2	GB97.1-85
06	15583-80202	00	Inching value ass'y 微动阀总成	1	See Fig.38
07	15583-82081	00	Shim 衬垫	1	
08	B0330-08025	00	Bolt 螺栓M8X25	4	GB5783-86
09	15583-83611	00	Cover, tor-con 变矩器盖	1	
10	B0330-10040	00	Bolt 螺栓M10X40	6	GB5783-86
11	B0330-08012	00	Bolt 螺栓M8X12	2	GB5783-86
12	12163-82311	00	Nipple 管接头	1	
13	12163-82301	00	Filter, oil 滤油器	1	
14	B8030-05045	00	Screw 螺钉M5X45	4	GB70-85
15	12163-82321	00	Piston 活塞	1	
16	12163-82331	00	Spring 弹簧	1	
17	12163-82341	00	Cup 安全阀盖	1	
18	12163-82421	00	Packing, copper 衬垫	1	
19	G0121-00021	D00	Plug 螺塞1/8"	4	
20	G0121-00011	D00	Plug 螺塞1/4"	7	
21	HRH25S3802 15583-80211	D00	Control ass'y 控制阀总成	1	See Fig.37
22	15583-82483	00	Gasket 垫片	1	
23	B0330-08035	00	Bolt 螺栓M8 × 35	4	GB5783-86
24	B0330-08055	00	Bolt 螺栓M8 × 55	2	GB5783-86
25	B0330-08050	00	Bolt 螺栓M8 × 50	4	GB5783-86
26	B5050-00008	00	Washer,lock 垫圈8	11	GB93-87
27	11243-82531A	D00	Gasket 垫片	1	
28	Z6003-00901	00	O-ring 0形圈9 × 1.9	2	GB1235-76
29	B5050-00010	00	Washer,lock 垫圈10	8	GB93-87

CPCD,CPQD10,15,18



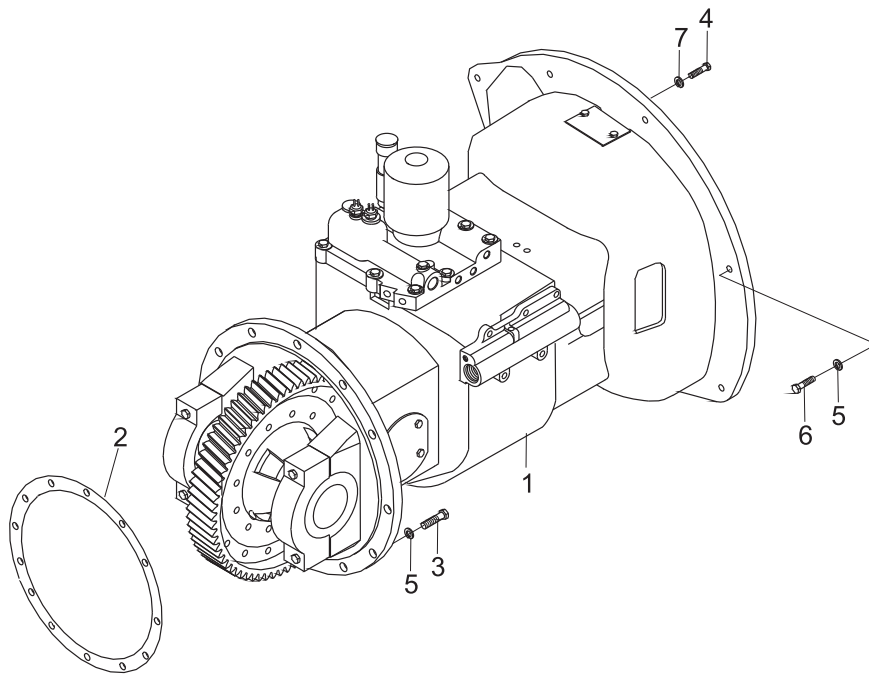
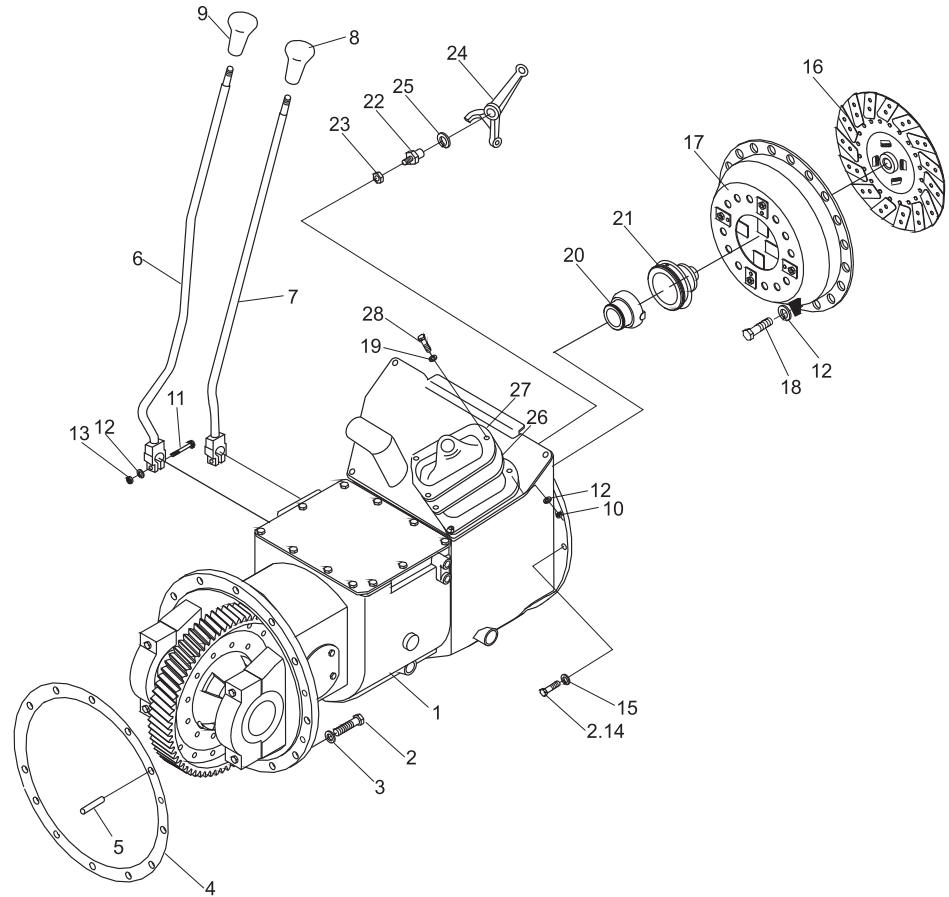
[illegible]

图15/FIG15

传动装置(机械式)/DRIVE UNIT MOUNT (CLUTCH TYPE)

序号 Item No	图 号 Part No	零部件名称 Description	件数 Q'ty	备 注 Remark
01	HRA0003401 11232-50001	Drive unit 传动装置	1	CPC10-18-XC2
02	B0530-10035	Bolt 螺栓M10X1.25X35	12	GB5786-86
			8	CPC10-18-HJ,HJ2 CPQ10-18-Rc,RC1,RC4
03	B5050-00010	Washer, lock 垫圈10	12	GB93-87
04	25592-52001	Packing 垫片	1	
05	GB119-86	Pin, parallel 销B8X30	1	
06	A12A2-50221	Lever, speed change 变速杆	1	
07	A12A2-50321	Lever, direction change 换向杆	1	
08	A22A2-52002	Knob, dirction 换向手柄	1	
09	A22A2-52022	Knob, speed 变速手柄	1	
10	B4125-00008	Nut 螺母M8	2	GB6170-86
11	B0212-08035	Bolt 螺栓M8X35	2	GB5782-86
12	B5050-00008	Washer, lock 垫圈8	10	GB93-87
13	B4116-00008	Nut 螺母M8	2	GB6170-86
14	B0230-10035	Bolt 螺栓M10X35	9	GB5782-86
15	B5050-00010	Washer, lock 垫圈10	9	GB93-87
16	13453-10301	Clutch disc Ass'y 离合器摩擦片总成	1	CPC10-18-XC2
-	114A3-10201	Clutch disc Ass'y 离合器摩擦片总成	1	CPC10-18-HJ,HJ2 CPQ10-18-Rc,RC1,RC4
17	13453-10402G	Clutch cover 离合器压盘及盖总成	1	CPC10-18-XC2
-	13553-10301A	Clutch cover 离合器压盘及盖总成	1	CPC10-18-HJ,HJ2 CPQ10-18-Rc,RC1,RC4
18	B0330-08020	Bolt 螺栓M8X20	6	GB5783-86
19	B5310-00008	Washer 垫圈8	2	GB97.1-85
20	15533-12031G	Retainer, bearing 分离轴承套筒	1	国产件Made in china CPC10-18-XC2
-	13453-12021G	Retainer, bearing 分离轴承套筒	1	国产件Made in china CPC10-18-HJ,HJ2 CPQ10-18-Rc,RC1,RC4
-	15533-12031	Retainer, bearing 分离轴承套筒	1	进口件Imported CPC10-18-XC2
-	13453-12021	Retainer, bearing 分离轴承套筒	1	进口件Import CPC10-18-HJ,HJ2 CPQ10-18-Rc,RC1,RC4
21	Z-9688211	Bearing, thrust 分离轴承9688211	1	国产件 Made in china CPC10-18-XC2
-	15533-10301	Bearing, thrust 分离轴承	1	进口件Import CPC10-18-XC2
-	13453-12031	Bearing, thrust 分离轴承	1	进口件Imported CPC10-18-HJ,HJ2 CPQ10-18-Rc,RC1,RC4
22	13073-12001	Pivot, clutch yoke 支撑螺栓	1	
23	B4216-00012	Nut 螺母M12X1.25	1	GB6171-86
24	10113-10122	Yoke, clutch 分离叉	1	
25	10113-10081	Snap ring 弹性挡圈	1	
26	13453-12052	Cover dust 分离叉护罩	1	
27	13453-12062	Retainer, cover 压板	1	
28	B0330-08016	Bolt 螺栓M8H16	2	GB5783-86

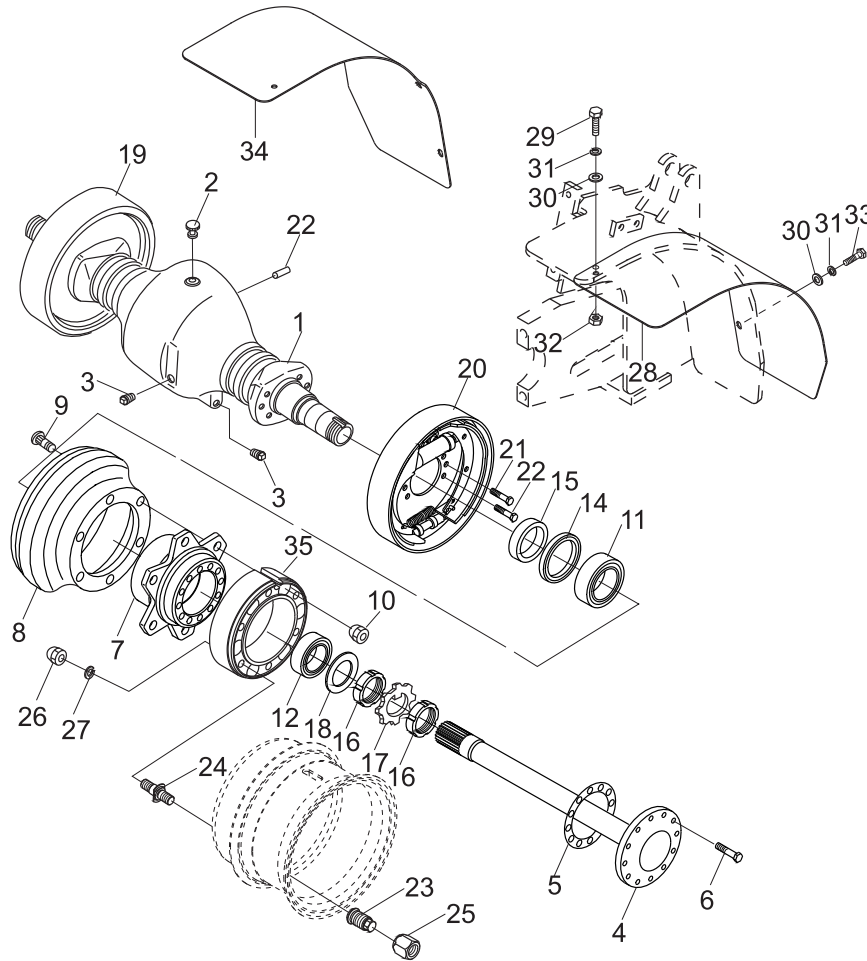
CPC(D) 10/15/18-XC/QC



驱动桥/DRIVE AXLE

图16/FIG16

CPC (D) 10/15/18-XC1K/QC1K
CPC (D) 10/15/18-WK



序号 Item No	图 号 Part No	零部件名称 Description	件数 Q'ty	备 注 Remark
01	24233-02001	Housing, axle	桥壳	1
02	22253-02063c	Plug	透气塞	1
03	22193-03001	Plug	堵塞	3
04	24843-02011	Half,shaft	半轴	2
05	24843-02061	Gasket	垫	2
06	24453-02061	Bolt	螺栓	16
07	24233-02021aG2	Hub,wheel	轮毂	2
08	24233-02011	Drum,braking	制动鼓	2
09	23654-32042G	Bolt	螺栓	12 单胎 Single tire
-	23654-32051G	Bolt	轮毂螺栓	12 双胎 Double tire
10	23654-34051	Nut	螺母	12
11	Z-30213	Big bearing,taper	轴承30213	2 GB/T297-94
12	23453-02071	Bearing & oil seal	轴承油封总成	2
13	23453-72001	Bolt	螺栓	8
14	Z6311-10014	Oil seal	U型密封圈FB100X125X12D	2 GB9877.1-88
15	22513-02051	Snap ring	挡环	2
16	B4735-00060	Nut	圆螺母M60X2	4 GB810-88
17	B5512-00060	Washer	垫圈60	2 GB858-88
18	23453-02091	Snap ring	垫	2
19	REF000576 21233-70201	Brake ass'y(R.H.)	制动器总成(右)	1 See Fig.53
20	REF000576 21233-70301	Brake ass'y(L.H.)	制动器总成(左)	1 See Fig.53
21	23453-72031	Bolt	螺栓	4
22	B3130-08026	Pin	销B8X26	1 GB119-86
23	E1193-02081	Nut,hub	柱螺母	12 双胎Double tire
24	E1193-02011	Bolt	螺栓柱	12 双胎Double tire
25	B4533-00014	Nut	螺母M14X1.5	12 GB6176-86 双胎Double tire
26	E1193-02091	Nut,hub	双胎球螺母	12 双胎Double tire
27	B5050-00014	Washer,lock	垫圈14	12 GB93-87 双胎Double tire
28	HRE12C3002 E12C3-02101	Fender	挡板(左)	1 双胎Double tire
29	B0110-10035	Bolt	螺栓M10X35	4 GB5781-86 双胎Double tire

图16/FIG16

驱动桥/DRIVE AXLE

序号 Item No	图 号 Part No	零部件名称 Description	件数 Q'ty	备 注 Remark
30	B5310-00010	Washer 垫圈	8	GB97.1-85 双胎 Double tire
31	B5050-00010	Washer,lock 垫圈	8	GB93-87 双胎 Double tire
32	B4116-00010	Nut 螺母M10	4	GB6170-86 双胎 Double tire
33	B0530-10020	Bolt 螺栓M10X1.25X20	4	GB5786-86 双胎 Double tire
34	HRE12C3002 E12C3-02111	Fender 挡板(右)	1	双胎 Double tire
35	E1193-02001	Joint bushing 联接套	2	双胎 Double tire

CPC (D) 10/15/18-XC1K/QC1K
CPC (D) 10/15/18-WK

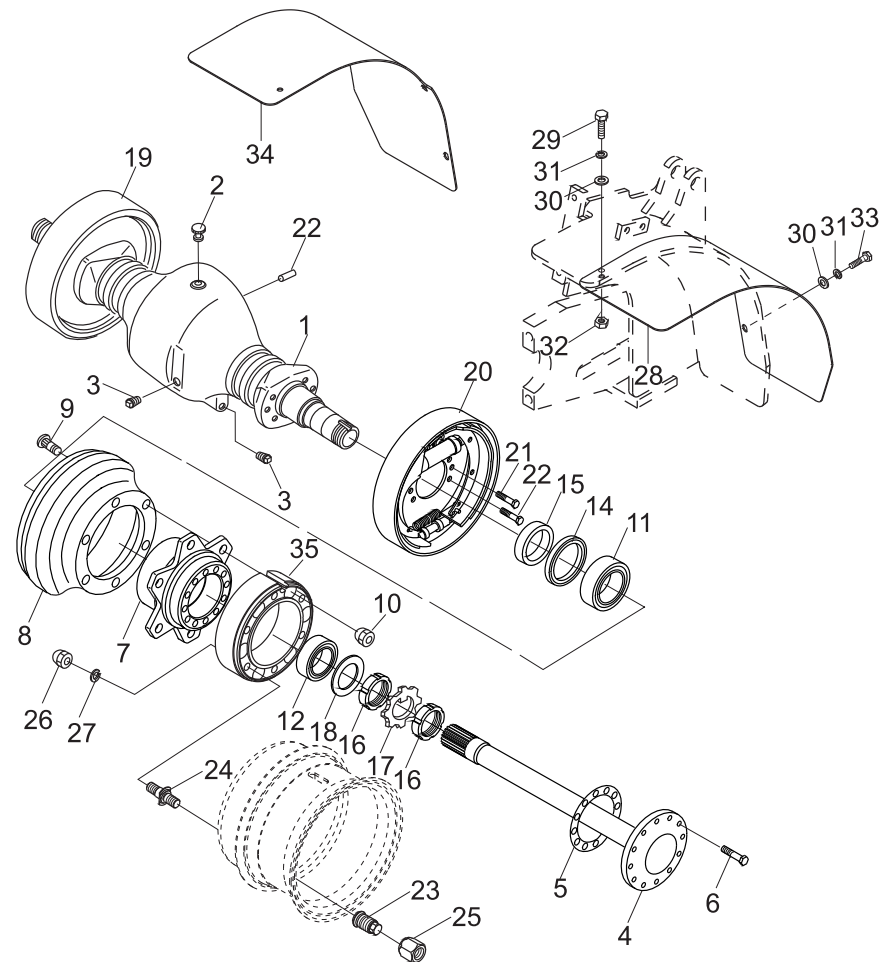


图17/FIG17

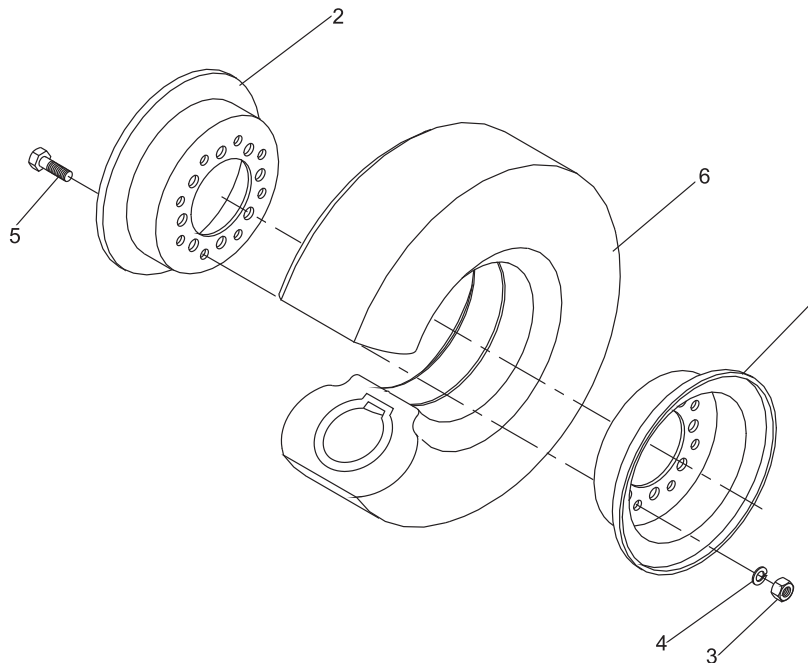
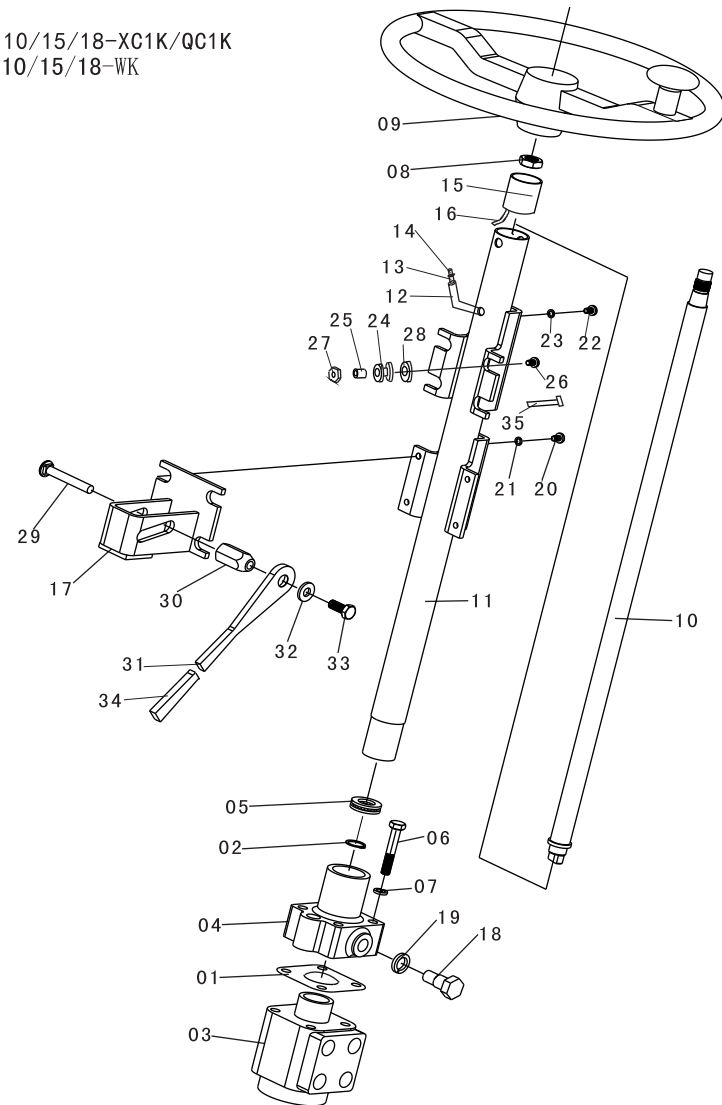
[illegible]

图18/FIG18

转向系统/STEERING SYSTEM

序号 Item No	图 号 Part No	零部件名称 Description	件数 Q'ty	备 注 Remark
1	22494-01020G	Shim 调整垫	2	
2	B6150-00020	Snap ring 挡圈20	1	GB894. 1-86
3	G0064-00051	Orbitrol 摆线全液压转向器105ml/r	1	
4	22494-01010G	Flange 联结法兰盘	1	
5	Z-51104	Bearing 轴承51104	1	GB/T301-95
6	B0230-10060	Bolt 螺栓10x55	4	GB5782-86
7	B5050-00006	Washer 垫圈10	4	GB93-87
8	B4430-00016	Nut 螺母M16X1.5	1	GB6173-86
9	A22A4-11101	Handle shaft 叉车方向盘 Φ360	1	
10	AF934-12011S	Shaft 转向轴	1	
11	AF934-10401S	Column 转向管柱	1	
12	E9200-3450B	Plastic pipe 塑料管 Φ3 L=450	1	
13	Z9120-0100G	Lead 导线QFR1.0 L=535	1	
14	Z9001-04B01	BNC 圆柱形插头	1	
15	212-3401305-B	Bushing 尼龙衬套	1	
16	212-3121042-B	Lead 带上衬套总成的按钮导线总成	1	
17	A22A4-10505	Bracket 支架	1	
18	24624-12001G	Bolt 螺栓	2	
19	B5050-00016	Washer 垫圈16	2	GB93-87
20	B0230-06035	Screw 螺栓M6X35	4	GB67-85
21	B1210-06010	Washer 垫圈6	4	GB97. 1-85
22	B0230-06035	Screw 螺栓M6X35	4	GB818-85
23	A22A4-12121	Washer 垫圈6	4	GB93-87
24	A22A4-12101	Rubber 橡胶套	8	
25	A22A4-12111	Pipe 套管	2	
26	B0230-06035	Bolt 螺栓M6X35	8	GB5782-86
27	B4123-00006	Nut 螺母M6	8	GB6170-86
28	A22A4-12121	Shim 垫圈	4	
29	A22A4-12131	Bolt 螺栓	2	
30	A22A4-12141	Nut 螺母	1	

CPC (D) 10/15/18-XC1K/QC1K
CPC (D) 10/15/18-WK



转向系统/STEERING SYSTEM 图18/FIG18

圖18/FIG18

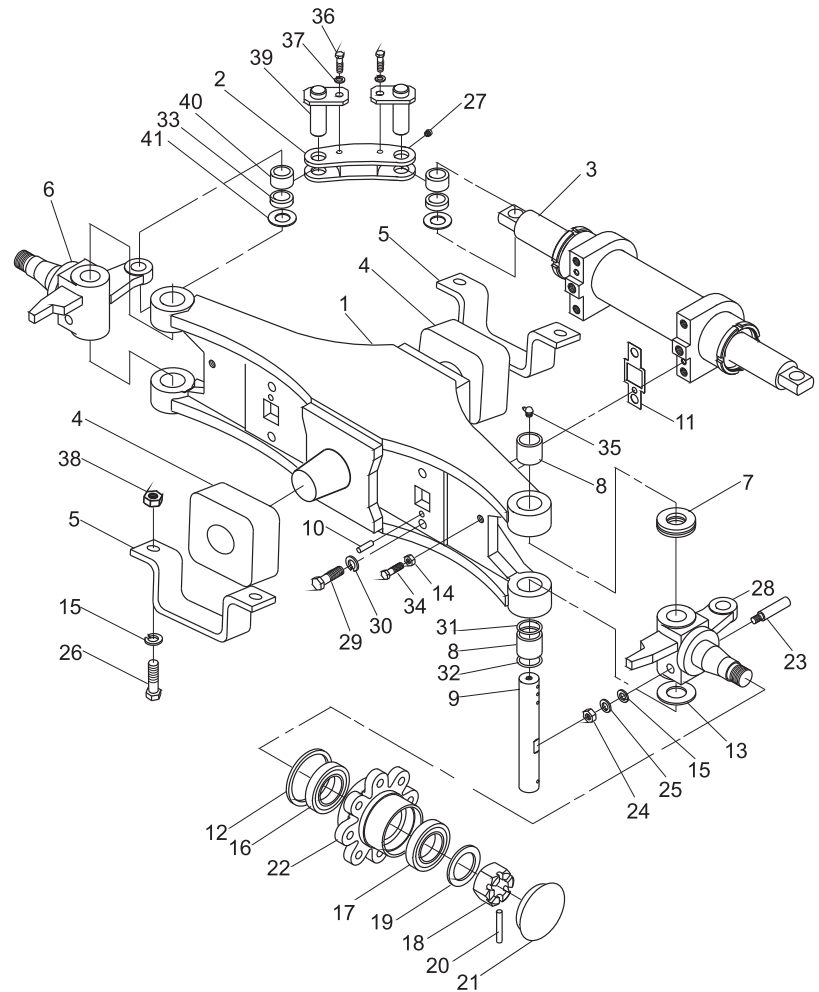
转向系统/STEERING SYSTEM 图18/FIG18

图19/FIG19

横置油缸转向桥/STEERING AXLE

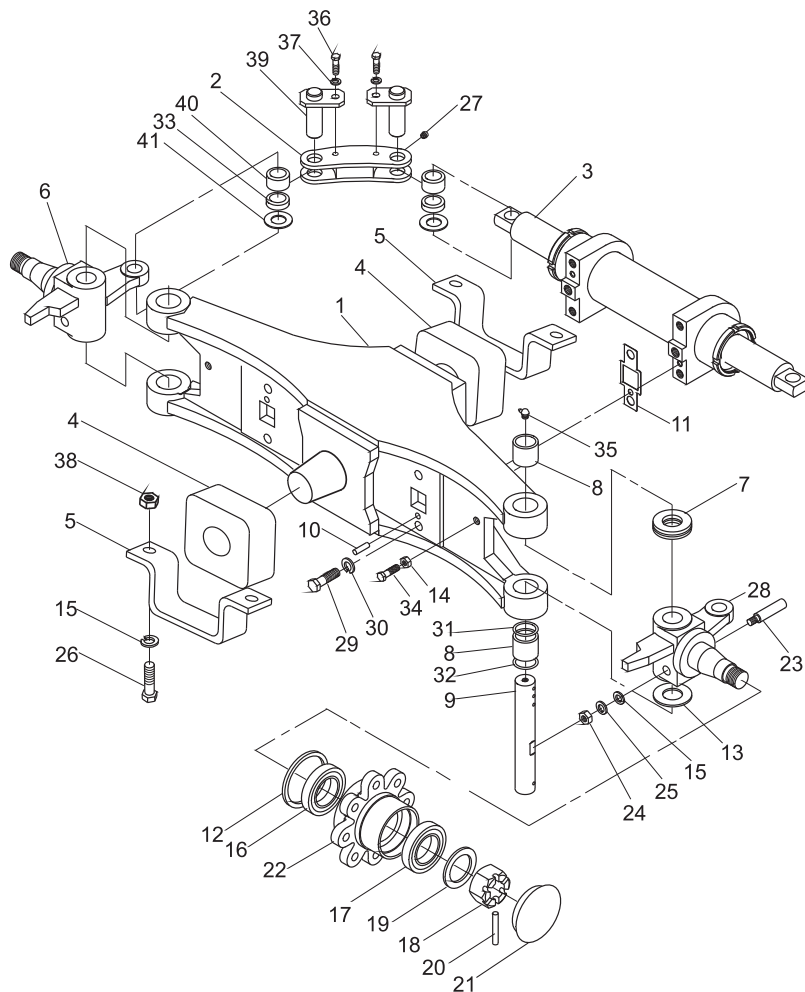
序号 Item No	图 号 Part No	零部件名称 Description	件数 Q'ty	备 注 Remark
01	H12C4-30202	Axle ass'y 转向桥体总成	1	
02	HRH12C4302 H12C4-32041	Link 连杆(左)	1	
-	HRH12C4302 H12C4-32051	Link 连杆(右)	1	
03	H12C4-50301S	Steering cylinder ass'y 转向油缸总成	1	See Fig.59
04	H24N4-32451	Rubber 减震块	2	
05	H24N6-12142	Bracket 支架	2	
06	H12C4-30301	Knuckle R.H. ass'y 右转向节总成	1	
07	Z-198905	Bearing 单列推力球轴承	2	198905
08	Z-942/25	Bearing 滚针轴承942/25	4	GB290-82
09	24234-32181	Pin,king 转向节主销	2	
10	B3120-08018	Pin 销8X18	2	GB119-86
11	H12C4-32111	Shim 调整垫	4	
12	22574-32102	Seal 骨架密封圈	2	
13	20114-30091	Shim 转向节调整垫	5	
14	B4218-00010	Nut 螺母M10X1.25	2	GB6171-86
15	B5050-00016	Washer,lock 垫圈16	2	GB93-87
16	Z-7208E	Bearing 轴承7208E	2	GB297-84
17	Z-7206E	Bearing 轴承7206E	2	GB297-84
18	B4218-00024	Nut 螺母M24X2	2	GB6171-86
19	B5310-00024	Washer 垫圈24	2	GB97.1-85
20	B3012-05045	Pin 销5X45	2	GB92-86
21	22194-32361	Cap 轮毂盖	2	
22	24234-32221	Hub 转向轮毂	2	
23	G27Z4-32011	Pin 紧定螺钉M12X30	2	
24	B4313-00012	Nut 螺母M12	2	GB6172-86
25	B5050-00012	Washer 垫圈12	2	GB93-87
26	B0230-16055	Bolt 螺栓M16X55	4	GB5782-86
27	Q700B06	Fitting grease 直通式滑脂嘴	4	ZBT33001.1-88
28	H12C4-30401	Knuckle L.H. ass'y 左转向节总成	1	
29	B0220-12035	Bolt 螺栓M12X35	4	GB5782-86

CPC (D) 10/15/18-XC1K/QC1K
CPC (D) 10/15/18-WK

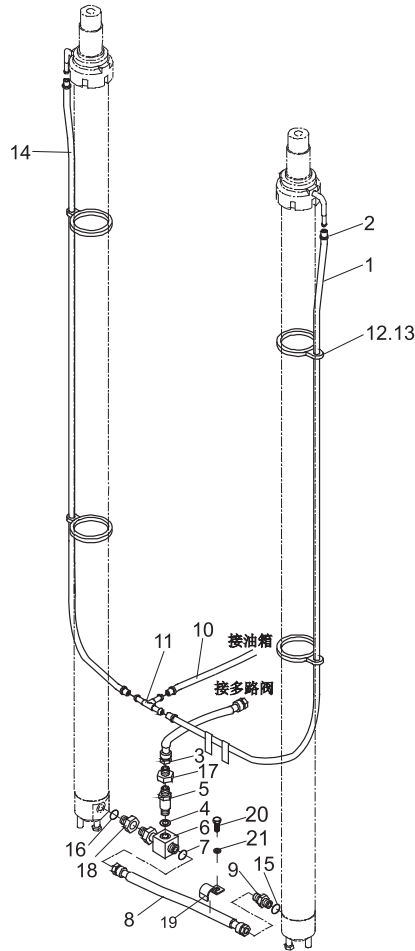


CPC (D) 10/15/18-XC1K/QC1K
CPC (D) 10/15/18-WK

件数	備 注
Q'ty	Remark

[illegible]

门架管路系统（基本型）/HYDRAUL IS SYSTEM (NORMAL) 图21/FIG21



CPC (D) 10/15/18-XC1K/QC1K
CPC (D) 10/15/18-WK

序号 Item No	图 号 Part No	零部件名称 Description	件数 Q'ty	备 注 Remark
A	HRD12C8601	Mast hydraulic system 门架管路系统	1	Metric 公制螺纹
-	HRE12C8601	Mast hydraulic system 门架管路系统	1	SAE 美制螺纹
01	Z7400-12000	Tube vinyl 塑料回油管 \varnothing 12XL	1	见表 See optional parts
02	Z4500-10016	Clip 卡箍10-16	6	
03	Z9502-1304522GS	Hose H.P. 高压胶管13IX450	1	Metric 公制螺纹
-	Z7802-1306422	Hose H.P. 高压胶管13IX640	1	SAE 美制螺纹
04	Z6700-02227	Washer 组合垫圈22	1	JB982-77
05	D10B8-60401	Flow regulator 限速阀	1	
06	JT6031-22031	Three way 三通接头	1	Metric 公制螺纹
-	JT8031-96031	Three way(Inc.07) 三通接头(包含07)	1	SAE 美制螺纹
07	Z6003-02202	O-ring 0型密封圈22X2.4	1	GB1235-76
08	Z9502-08033	Hose H.P. 高压胶管8IX330	1	Metric 公制螺纹
-	Z7802-08034	Hose H.P. 高压胶管8IX340	1	SAE 美制螺纹
09	D12C8-60211	Valve(Inc.15) 切断阀(包含15)	1	Metric 公制螺纹
-	E12C8-60211	Valve(Inc.15) 切断阀(包含15)	1	SAE 美制螺纹
10	Z7400-14105	Tube vinyl 塑料回油管 \varnothing 14X1050	1	Metric 公制螺纹
-	Z7400-12105	Tube vinyl 塑料回油管 \varnothing 12X1050	1	SAE 美制螺纹
11	JT6031-08011	Three way 三通接头	4	
12	24239-44311	Band 回油管管夹片	4	
13	23659-40010G	Clip 卡箍	1	
14	Z7400-12000	Tube vinyl 塑料回油管 \varnothing 12XL	1	见表 See optional parts
15	Z6004-01802	O-ring 0形密封圈18X2.4	1	GB1235-76
16	Z6003-02202	O-ring 0形密封圈22X2.4	1	GB1235-76
17	D12C8-65001	Elbow 直角接头	1	Metric 公制螺纹
-	E20B8-60201	Nipple 过渡接头	1	SAE 美制螺纹
18	JT6021-20101	Nipple(Inc.16) 直通接头(包含16)	1	
19	D12C8-62021	Clip 管夹	1	
20	B0330-10020	Bolt 螺栓M10x1.25x20	1	
21	B5050-00010	Lock washer 垫圈10	1	

图21/FIG21

门架管路系统（基本型）/HYDRAUL IS SYSTEM (NORMAL)

起升高度 IFTING HEIGHT	件1塑料回油管长度 PLASTIC HOSE		件14塑料回油管长度 PLASTIC HOSE		备 注 REMARK
	图 号（公制） PART NO (METRIC)	图 号（美制） PART NO (SAE)	图 号（公制） PART NO (METRIC)	图 号（美制） PART NO (SAE)	
M200	Z7400-12103	Z7400-12115	Z7400-12102	Z7400-12110	
225	-12125	-12125	-12120	-12120	
250	-12140	-12140	-12135	-12135	
270	-12150	-12150	-12145	-12145	
275	-12150	-12150	-12145	-12145	
300	-12150	-12160	-12150	-12160	标准 STD
325	-12175	-12175	-12170	-12170	
330	-12165	-12180	-12160	-12175	
350	-12190	-12190	-12185	-12185	
366	-12200	-12200	-12195	-12195	
370	-12200	-12200	-12195	-12195	
375	-12200	-12200	-12195	-12195	
400	-12205	-12220	-12200	-12215	
425	-12230	-12230	-12250	-12250	
450	-12230	-12245	-12225	-12240	
475	-12255	-12255	-12250	-12250	
500	-12270	-12270	-12265	-12265	
550	-12300	-12300	-12295	-12295	
600	-12325	-12325	-12320	-12320	
310	-12156	12156	-12156	-12156	

CPC (D) 10/15/18-XC1K/QC1K
CPC (D) 10/15/18-WK

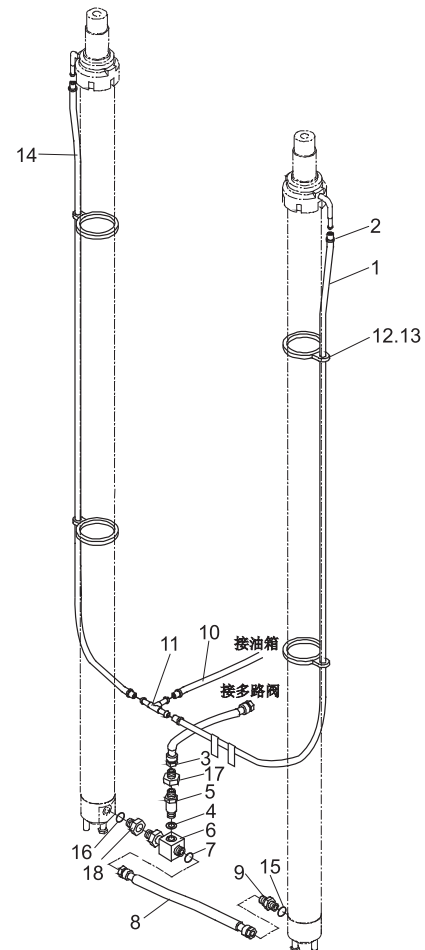
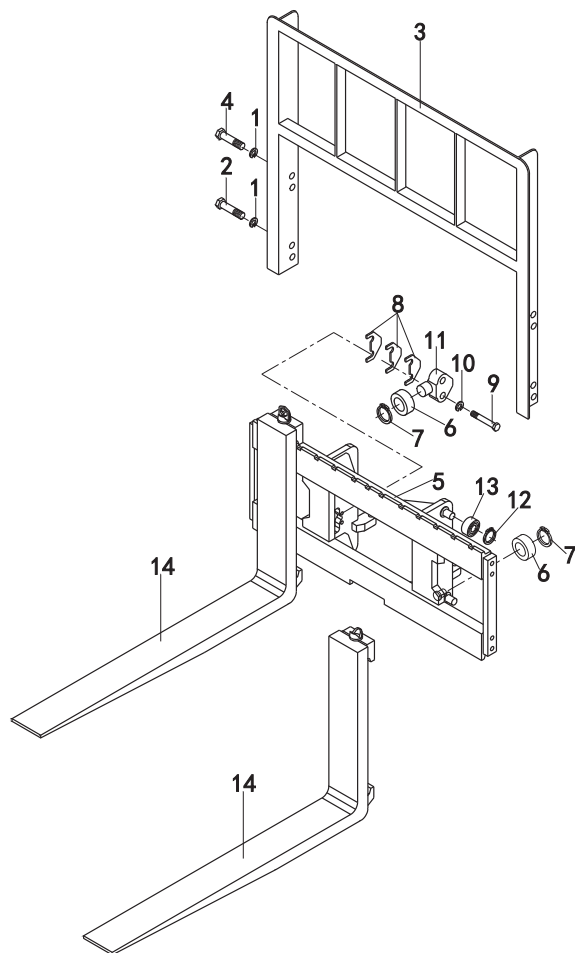


图22/FIG22

[illegible]

货叉与货叉架(基本型)/FORK&LIFT BRACKET

CPC (D) 10/15/18-WK

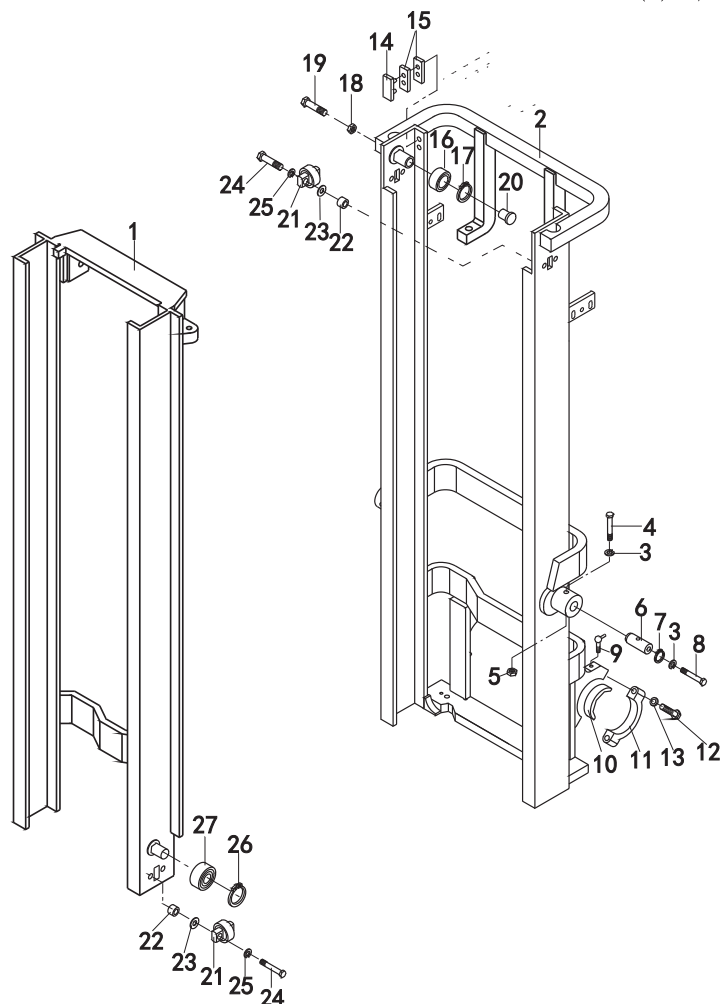
This exploded view diagram illustrates the assembly of a pallet jack. The components are numbered as follows:

- 1**: Two pins used to secure the top handle frame.
- 2**: Two pins used to secure the top handle frame.
- 3**: The top handle frame, which includes a central grip section and side rails.
- 4**: Two pins used to secure the top handle frame.
- 5**: The main body frame of the jack, including the front and rear rails.
- 6**: Two pins used to secure the main body frame.
- 7**: Two pins used to secure the main body frame.
- 8**: Two pins used to secure the main body frame.
- 9**: A pin used to secure the main body frame.
- 10**: A pin used to secure the main body frame.
- 11**: A pin used to secure the main body frame.
- 12**: A pin used to secure the main body frame.
- 13**: A pin used to secure the main body frame.
- 14**: The two long, tapered forks of the jack.

门架(基本型)/MAST(NORMAL MAST)

图23/FIG23

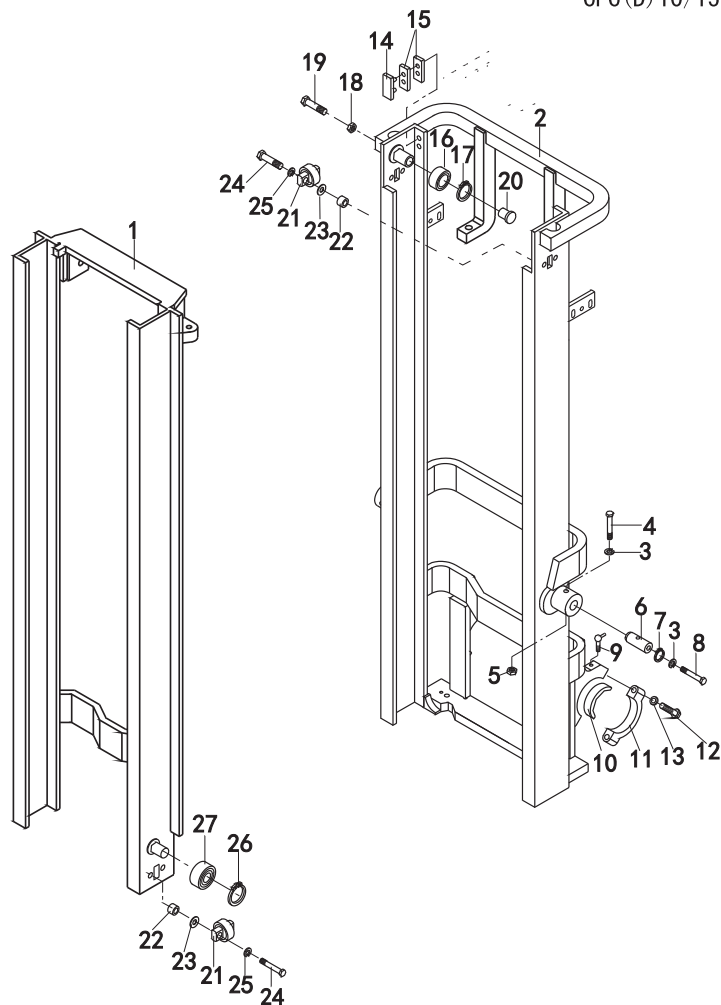
CPC(D) 10/15/18-XC1K/QC1K
CPC(D) 10/15/18-WK



序号 Item No	图 号 Part No	零部件名称 Description	件数 Qty	备 注 Remark
01	HRD12C8303A	Inner master	1	CPQ(D)10-18-RC,RC1,RC4 CPC(D)10-18-XC2
-	HRD12C8303	Inner master	1	CPC(D)10-18-HJ,HJ2 ,WS1,WS2,Ku6,Ku11
02	HRD12C8302A	Outer master	1	CPQ(D)10-18-RC,RC1,RC4 CPC(D)10-18-XC2
-	HRD12C8302	Outer master	1	CPC(D)10-18-HJ,HJ2 ,WS1,WS2,Ku6,Ku11
03	B5050-00012	Washer,lock	4	GB93-87
04	01100-12080	Bolt	2	
05	B4116-00012	Nut	2	GB6170-86
06	D10B8-02301	Pin	2	倾斜油缸销轴II
07	27042-62661	Snap ring	2	挡圈
08	B0330-12025	Bolt	2	螺栓M12X25 GB5783-86
09	Q700B01	Grease fitting	2	直通式滑脂嘴 CPQ(D)10-18-RC,RC1,RC4 CPC(D)10-18-XC2 ZBT33001.1-88
-	Q701B45	Grease fitting	2	弯颈式滑脂嘴 CPC(D)10-18-HJ,HJ2 ,WS1,WS2,Ku6,Ku11 ZBT33001.2-18
10	D20B8-02001	Bushing	2	轴衬
11	24236-12632	Cap	2	支座盖
12	B0230-14065	Bolt	4	螺栓M14X65 GB5782-86
13	B5050-00014	Washer,lock	4	垫圈14 GB93-87
14	20028-32001*G	Slipper	2	限位滑块
15	20029-43231* ² _{*1}	Shim	4组	调整垫片
16	22198-22341	Side roller	2	侧滚轮
17	B6150-00030	Snap ring	2	挡圈30 GB894.1-86
18	B4116-00010	Nut	2	螺母M10 GB6170-86
19	B8330-10035	Screw	2	螺钉M10X35 GB79-85
20	D10B8-03201	Slipper	2	滑块
21	22018-30303G	Side roller	4	侧滚轮
22	20019-32841	Spacer	8	垫块
23	23308-22051*	Shim	4组	调整垫片
24	B0530-10045	Bolt	8	螺栓M10X1.25X45 CPQ(D)10-18-RC,RC1,RC4 CPC(D)10-18-XC2 GB5786-86
-	B0330-10045	Bolt	8	螺栓M10X45 CPC(D)10-18-HJ,HJ2 ,WS1,WS2,Ku6,Ku11 GB5783-86
25	B5050-00010	Washer,lock	8	垫圈10 GB93-87
26	B6150-00040	Snap ring	2	挡圈40 GB894.1-86

CPC(D) 10/15/18-XC1K/QC1K
CPC(D) 10/15/18-WK

门架选用件表 Mast Optional Parts



起升高度 LIFTING HEIGHT	外门架总成 OUTER MAST	内门架总成 INNER MAST	备 注 REMARK
M200	D12C8-30011A	D12C8-30411A	
225	-30021A	-30421A	
250	-30031A	-30431A	
270	-30041A	-30441A	
275	-30051A	-30451A	
300	-30001A	-30401A	标准 STD
325	-30061A	-30461A	
330	-30071A	-30471A	
350	-30081A	-30481A	
366	-30091A	-30491A	
370	-30101A	-30511A	
375	-30111A	-30521A	
400	-30121A	-30531A	
425	-30131A	-30541A	
450	-30141A	-30551A	
475	-30151A	-30561A	
500	-30161A	-30571A	
550	-30171A	-30581A	
600	-30181A	-30591A	
310		-30611A	

图23/FIG23

门架 (基本型) /MAST (NORMAL MAST)

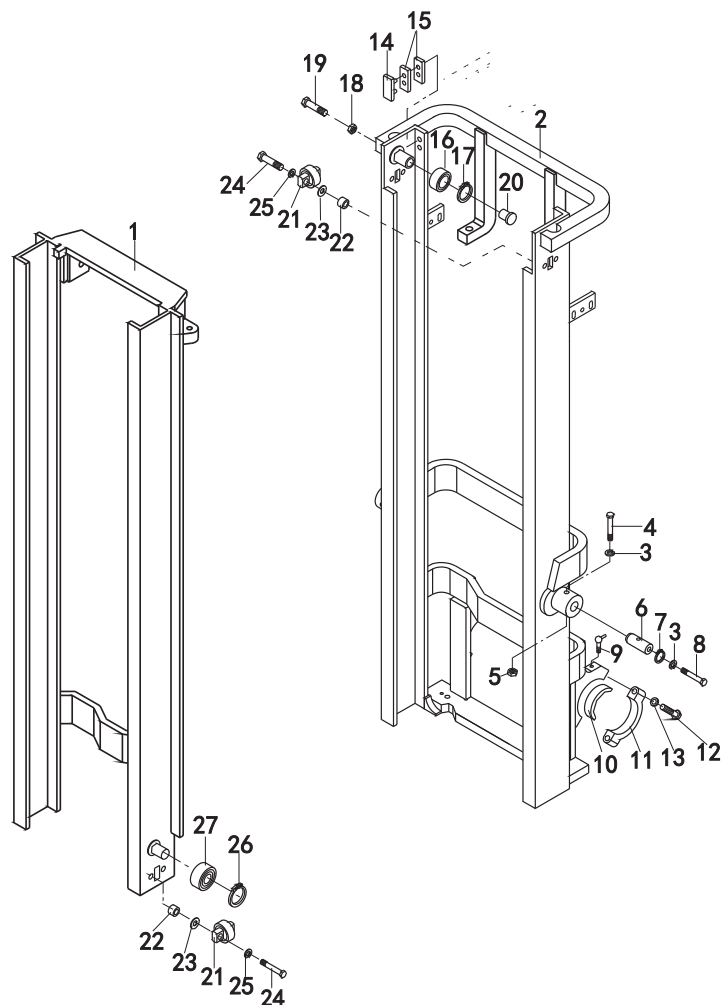
门架选用件表 Mast Optional Parts

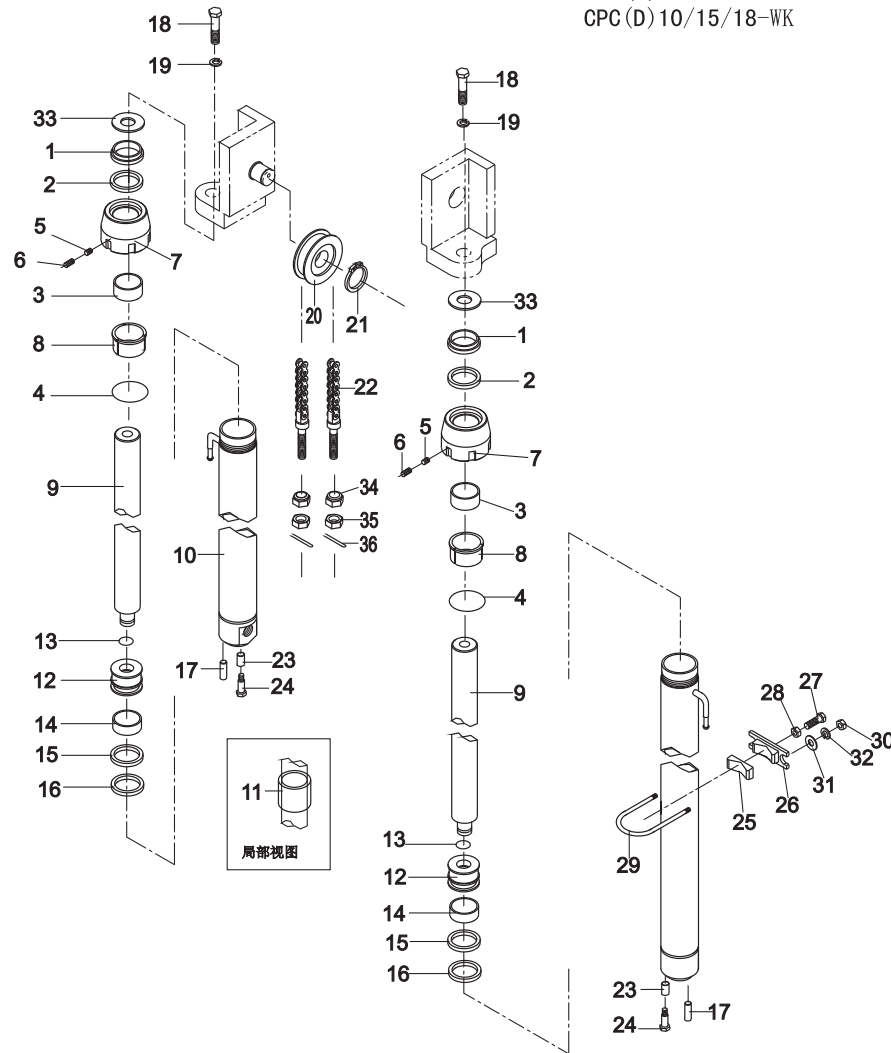
备 注
Remark

起升高度 LIFTING HEIGHT	外门架总成 OUTER MAST	内门架总成 INNER MAST	备 注 REMARK
M200	D12C8-30011	D12C8-30411	
225	-30021	-30421	
250	-30031	-30431	
270	-30041	-30441	
275	-30051	-30451	
300	-30001	-30401	标准 STD
325	-30061	-30461	
330	-30071	-30471	
350	-30081	-30481	
366	-30091	-30491	
370	-30101	-30511	
375	-30111	-30521	
400	-30121	-30531	
425	-30131	-30541	
450	-30141	-30551	
475	-30151	-30561	
500	-30161	-30571	
550	-30171	-30581	
600	-30181	-30591	

CPC (D) 10/15/18-XC1K/QC1K

CPC (D) 10/15/18-WK





Item No	Part No	Edition	零部件名称 Description	件数 Q'ty	备 注 Remark
A	HRD12C8402	B.5	Lift cylinder(Inc.01-17) 起升油缸总成 (包含01-17)	2	
01	HRD20A8508 D10B8-42321	B.1	Seal 防尘圈	2	
02	HRD20B8406 D10B8-42331	B.1	Packing 密封圈	2	
03	Z2113-03630	B.0	Bushing 钢背轴承3630	2	
04	Z6053-04752	B.0	O-ring O形圈47. 5X2. 65	2	GB3452.1-92
05	D20B8-42341	B.1	Plug 塞子	4	
06	B1830-08008	B.0	Screw 螺钉M8X8	4	GB80-85
07	D12C8-42051	B.1	Cap 导向套	2	
08	D12C8-42041	B.1	Sleeve 衬套	2	
09	HRD12C8403	B.1	Cylinder 缸筒体	2	
10	HRD10B8405	B.0	Rod 活塞杆	2	
11	HRD20A8405 D10B8-42511	B.1	Spacer 调整套		
12	D12C8-42061	B.1	Piston 活塞	2	
13	D20B8-42381	B.1	Snap ring 钢丝挡圈	2	
14	HRD20A8409 D10B8-42521	B.1	Wearing 支承环	2	
15	HRD20A8509 D20A8-42541	B.1	Snap ring 挡片	2	
16	HRD20A8505 D10B8-42531	B.1	U-ring U形密封圈	2	
17	B3130-10026	B.0	Pin 销B10X26	2	GB119-86
18	B0530-14050	B.0	Bolt 螺栓M14X1. 5X50	2	GB5786-86
19	B5050-00014	B.0	Washer,lock 垫圈14	2	GB93-87
20	24239-44091	B.0	Sheave 链轮	2	
21	B6150-00040	B.0	Snap ring 弹性挡圈40	2	GB894.1-87
22	HRLH1223011-N	B.1	Chain(Inc.34-36) 链条总成 (包含34-36)	2	
23	HRD20B8407 D20B8-42031	B.0	Sleeve 隔套	2	
24	B0530-12025	B.0	Bolt 螺栓M12X1. 25X25	2	GB5786-86
25	D14F0-92041	B.0	Spacer 调整块	2	
26	D14F0-92051	B.0	Support 油缸支撑块	2	
27	B0530-12050	B.0	Bolt 螺栓M12X1. 25X50	2	GB5786-86
28	B4223-00012	B.0	Nut 螺母M12X1. 25	2	GB6171-86
29	HRD20B8408 D10B8-42811	B.2	U-bolt U型螺栓	2	

CPC(D) 10/15/18-XC1K/QC1K
CPC(D) 10/15/18-WK

起升油缸选用件 OPTION TABLE FOR LIFT CYLINDER

起升高度 LIFTING HEIGHT	起升油缸 LIFT CYL	缸体 LYL. BODY	活塞杆 Rid, piston	链条节数(N) Chain, leaf	调整套(个) Spacer(N)
M 200	HRD12C8402 D12C8-40411	HRD12C8403 D12C8-40611	HRD10B8405 D12C8-42111	HRLH1223011 -73	
225	-40421	-40621	-42121	-79	
250	-40431	-40631	-42131	-85	
270	-40441	-40641	-42141	-91	
275	-40451	-40651	-42151	-91	
标准 STD 300	-40401	-40601	-42101	-99	
325	-40461	-40661	-42161	-105	
330	-40471	-40671	-42171	-107	
350	-40481	-40681	-42181	-113	
366	-40491	-40691	-42191	-117	
370	-40511	-40711	-42211	-117	
375	-40521	-40721	-42221	-117	
400	-40531	-40731	-42231	-127	1
425	-40541	-40741	-42241	-133	1
450	-40551	-40751	-42251	-139	1
475	-40561	-40761	-42261	-147	1
500	-40571	-40771	-42271	-153	1
550	-40581	-40781	-42281	-169	2
600	-40591	-40791	-42291	-183	2
360	-40592	-40792	-42292		
310	-40801	-40794	-42294	-101	

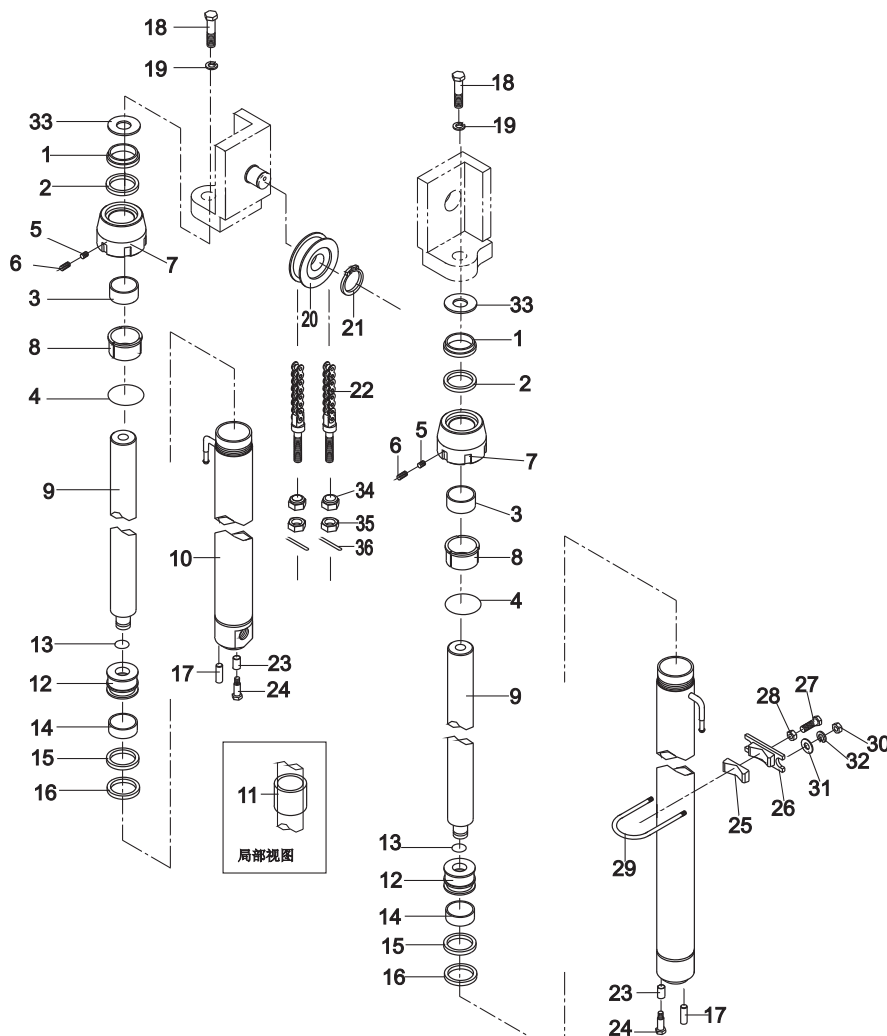
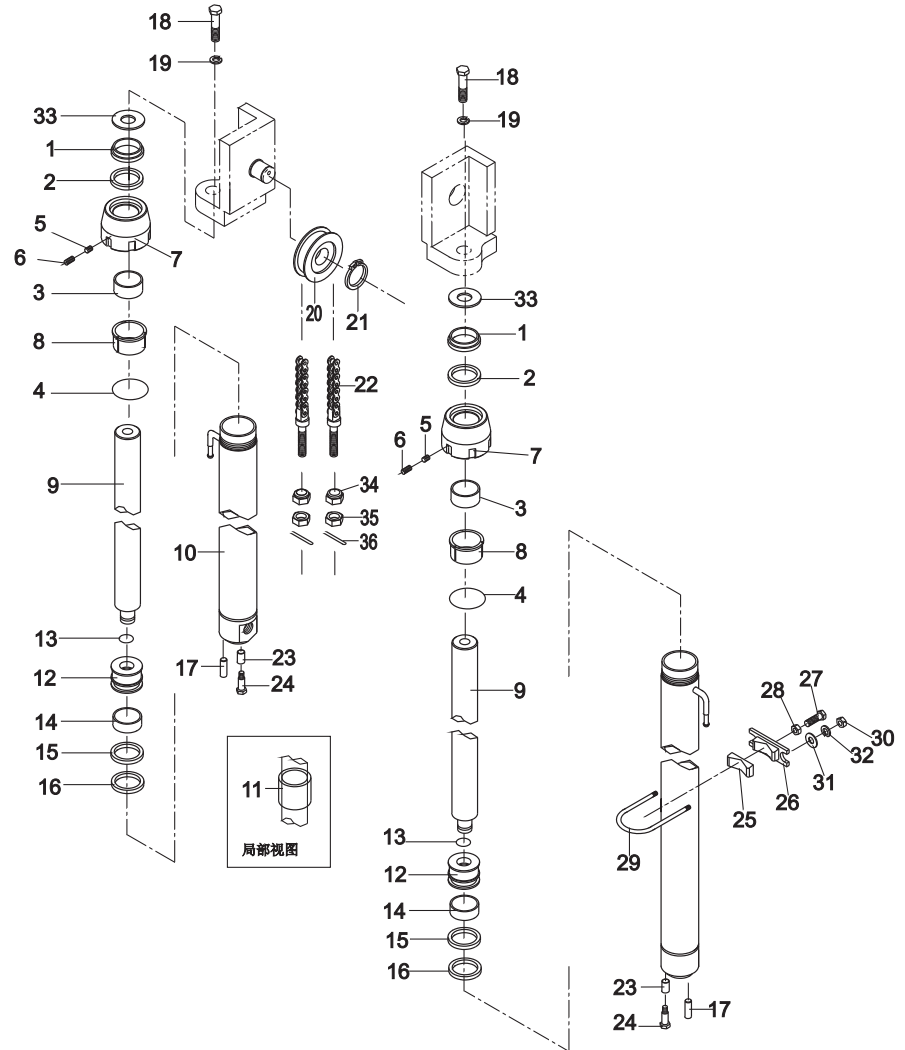


图24/F1G24

起升油缸（基本型）/LIFT CYLINDER(NORMAL MAST)

序号 Item No	图 号 Part No	版本 Edition	零部件名称 Description	件数 Q'ty	备 注 Remark
A	HRD65E8501	B.3	Tilt cylinder 倾斜油缸	2	
1	HRD10B8507 D10B8-52111	B.1	Ear ring L.H. 耳环(左)	1	
-	HRD10B8507 D10B8-52011	B.1	Ear ring R.H. 耳环(右)	1	
2	23658-52401	B.1	Plug 塞子	2	
3	B1830-10010	B.0	Screw 螺钉M10X10	2	GB80-85
4	HRD65E8502	B.2	Spacer 调整轴套	2	见表 See optional parts
5	REF341310 24248-52341	D.1	Dust seal 防尘圈	2	
6	B6050-00047	B.0	Snap ring 挡圈47	4	GB893.1-86
7	D10B8-52051	B.1	Guide Sleeve 导向套	2	
8	24248-52351	B.0	Snap ring 挡圈	2	
9	REF340216 24248-52331	B.1	Snap ring 挡圈30x43x3	2	
10	REF340213 24248-52321	B.1	U-ring U型密封圈30x43x10	2	
11	Z6053-06303	B.0	O-ring O型密封圈63X3.55	2	GB3452.1-92
12	Z2133-03025	B.0	Bushing 钢背轴承3025	2	
13	D65E8-50201	B.1	Body,piston ass'y 活塞体	2	
14	HRD65E8503	B.2	Tube,cylinder ass'y 缸筒总成	2	
15	REF340214 22439-43711	B.0	U-ring U型密封圈	4	
16	24248-52251	B.1	Wearing 支承环	2	
17	REF340270 63626-23071	B.0	Bushing 轴套	2	
18	Q700B01	B.1	Grease 直通式滑脂嘴	2	ZBT33001.1-88
19	HRH22A8309 H22A8-00201	B.6	Pin 倾斜油缸销轴	2	
20	D20B8-50211	B.0	Bushing 关节轴承	2	
21	B0230-14055	B.0	Bolt 螺栓M14X55	2	GB5782-86
22	B4123-00014	B.0	Nut 螺母M14	2	GB6170-86
23	B5050-00014	B.0	Washer,lock 垫圈14	2	GB93-87
24	24238-52121	B.1	Shim 垫片	4	选用 Option
25	D10B8-52061	B.0	Spacer 调整轴套	4	前3?/后6?;前3?/后3?
26	B5050-00010	B.0	Washer,lock 垫圈10	2	GB93-87
27	B0530-10020	B.0	Bolt 螺栓M10X1.25X20	2	GB5786-86

CPC(D) 10/15/18-XC1K/QC1K
CPC(D) 10/15/18-WK

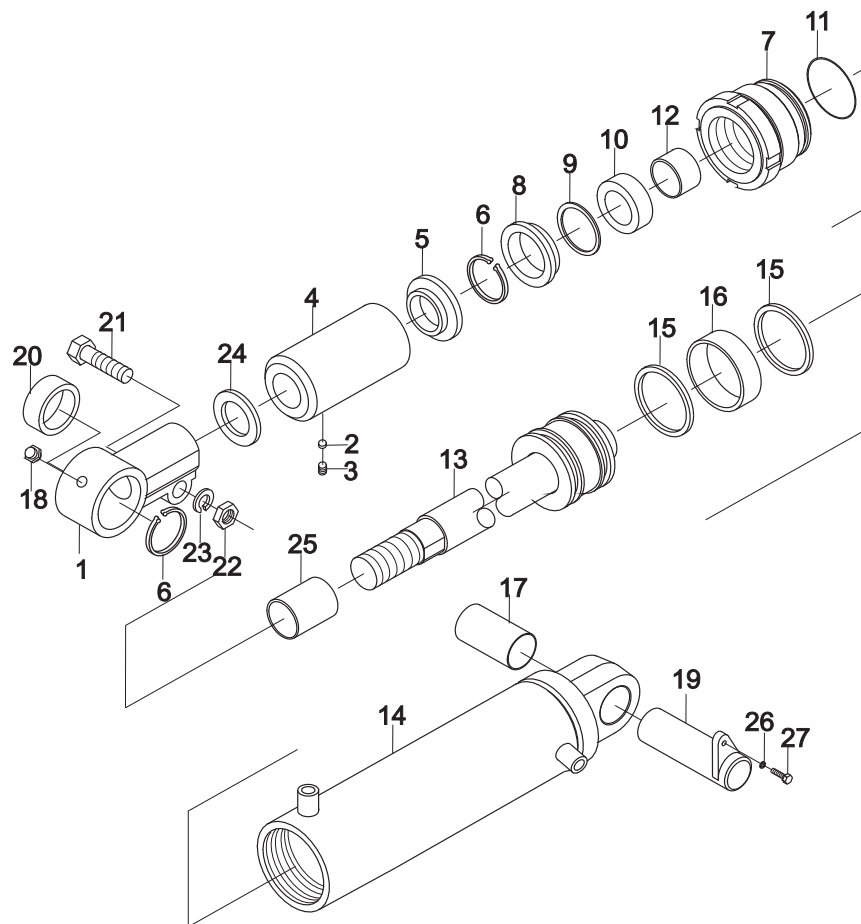


HELI

倾斜油缸/TILT CYLINDER

图25/FIG25

CPC (D) 10/15/18-XC1K/QC1K
CPC (D) 10/15/18-WK



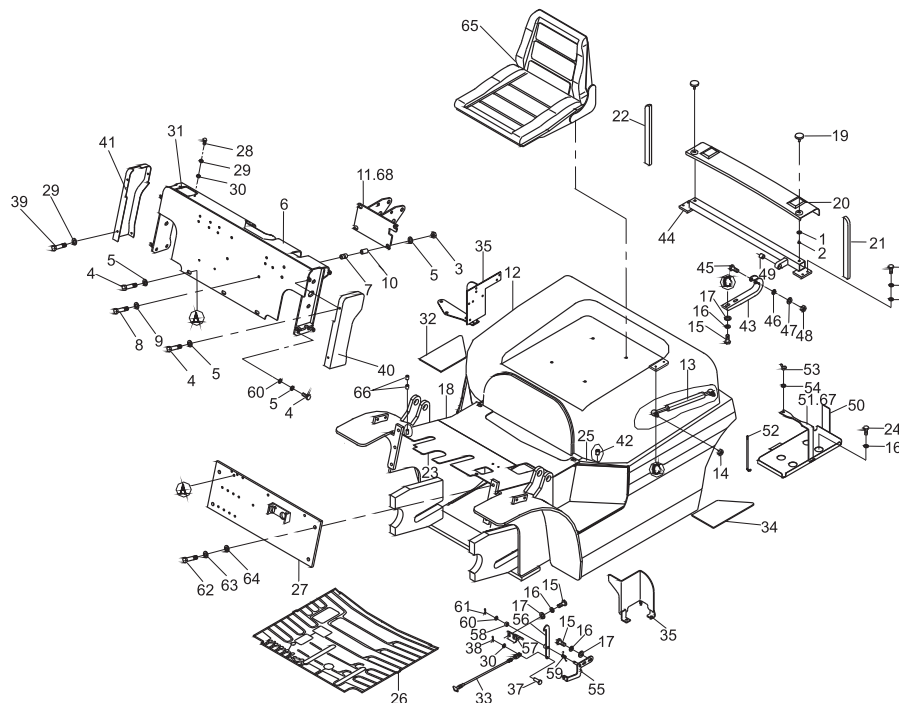
序号 Item No	图 号 Part No	版本 Edition	零部件名称 Description	件数 Q'ty	备 注 Remark
A	HRD65E8501	B.3	Tilt cylinder 倾斜油缸	2	
1	HRD10B8507 D10B8-52111	B.1	Ear ring L.H. 耳环(左)	1	
-	HRD10B8507 D10B8-52011	B.1	Ear ring R.H. 耳环(右)	1	
2	23658-52401	B.1	Plug 塞子	2	
3	B1830-10010	B.0	Screw 螺钉M10X10	2	GB80-85
4	HRD65E8502	B.2	Spacer 调整轴套	2	见表 See optional parts
5	REF341310 24248-52341	D.1	Dust seal 防尘圈	2	
6	B6050-00047	B.0	Snap ring 挡圈47	4	GB893.1-86
7	D10B8-52051	B.1	Guide Sleeve 导向套	2	
8	24248-52351	B.0	Snap ring 挡圈	2	
9	REF340216 24248-52331	B.1	Snap ring 挡圈30x43x3	2	
10	REF340213 24248-52321	B.1	U-ring U型密封圈30x43x10	2	
11	Z6053-06303	B.0	O-ring O型密封圈63X3. 55	2	GB3452.1-92
12	Z2133-03025	B.0	Bushing 钢背轴承3025	2	
13	D65E8-50201	B.1	Body,piston ass'y 活塞体	2	
14	HRD65E8503	B.2	Tube,cylinder ass'y 缸筒总成	2	
15	REF340214 22439-43711	B.0	U-ring U型密封圈	4	
16	24248-52251	B.1	Wearing 支承环	2	
17	REF340270 63626-23071	B.0	Bushing 轴套	2	
18	Q700B01	B.1	Grease 直通式滑脂嘴	2	ZBT33001.1-88
19	HRH22A8309 H22A8-00201	B.6	Pin 倾斜油缸销轴	2	
20	D20B8-50211	B.0	Bushing 关节轴承	2	
21	B0230-14055	B.0	Bolt 螺栓M14X55	2	GB5782-86
22	B4123-00014	B.0	Nut 螺母M14	2	GB6170-86
23	B5050-00014	B.0	Washer,lock 垫圈14	2	GB93-87
24	24238-52121	B.1	Shim 垫片	4	选用 Option
25	D10B8-52061	B.0	Spacer 调整轴套	4	前3?/后6?;前3?/后3?
26	B5050-00010	B.0	Washer,lock 垫圈10	2	GB93-87
27	B0530-10020	B.0	Bolt 螺栓M10X1. 25X20	2	GB5786-86

倾斜油缸/TILT CYLINDER

CPC (D) 10/15/18-XC1K/QC1K
CPC (D) 10/15/18-WK

This exploded view diagram illustrates the assembly of a mechanical component, likely a pump or valve. The components are numbered 1 through 27. The assembly is shown in a disassembled state, with parts arranged along a central horizontal axis. Key components include a main housing (1), a central shaft (13), a piston or plunger (4), and various seals and rings (5, 6, 8, 9, 10, 12, 15, 16, 17, 20, 21, 22, 23, 24, 25, 26, 27). The diagram uses perspective to show the relative positions and orientations of the parts, with lines indicating the assembly path.

CPC (D) 10/15/18-XC1K/QC1K
CPC (D) 10/15/18-WK



序号 Item No	图 号 Part No	零部件名称 Description	件数 Q'ty	备 注 Remark
1	B0530-16035	Pin 螺栓M16x1.5x35	4	
2	B5310-00016	Washer 垫圈16	4	
3	B5050-00016	Lock Washer 垫圈16	4	
4	X81E6-40211	Plate 前板总成	1	
5	B0530-10020	Bolt 螺栓M10X1.25X20	9	
6	B5050-00010	Lock Washer 垫圈10	9	
7	B5210-00010	Washer 垫圈10	7	
8	X81E6-40201	Cabinet 仪表架	1	
9	B0330-06016	Bolt 螺栓M6X16	1	
10	B5050-00006	Washer 垫圈6	4	
11	A01D6-41001	Push-pull cable 拉锁总成	1	无
12	X81E6-40001	Bonnet 内燃机罩	4	
13	A01D6-40601	Stopper 支脚	2	
14	KM916-40501	Shock, absorber 气弹簧总成	2	
15	B4123-00008	Nut 螺母M8	1	
16	B5310-00008	Washer 垫圈8	1	
17	B5050-00008	Lock Washer 垫圈8	1	
18	B0110-10020	Bolt 螺栓M10X20	4	
19	B5050-00010	Lock Washer 垫圈10	4	
20	B5310-00010	Washer 垫圈10	4	
21	A33D6-42171	Shim 调整垫	1	
22	X81E6-40231	Hinge 铰链	2	
23	A24K6-42411	Bolt 螺栓	1	
24	B5310-00006	Washer 垫圈6	2	
25	B4123-00006	Nut 螺栓M6	1	
26	H12C6-40301	Bracket 支架	1	
27	B3220-06015	Pin 销6x15	1	
28	A22A6-42511	Screw 螺钉	2	
29	X81E6-50201	Floor board (Rear) 后底板总成	1	
30	B0330-08016	Bolt 螺栓M8X16	8	

图28/FIG28

机罩、底板及座椅/HOOD、FLOOR BOARD & SEAT

序号 Item No	图 号 Part No	零部件名称 Description	件数 Q'ty	备 注 Remark
31	KM916-42171	Bracket	支架	1
32	KM916-42191	Handle	手柄	1
33	KM916-42201	Pin	销轴	1
34	KM916-42311	Spring	弹簧	1
35	HRH12C6508	Gasket	底板垫	1
36	X81E6-50211	Floor board (Front)	前底板总成	1
37	HRH26D6412	Cap	护罩 (左)	1
38	HRH26D6412	Cap	护罩 (右)	1
39	A24K6-42421	Bushing	衬套	1
40	B3010-02010	Pin	销2x10	1
41	H24C6-80001	Seat	座椅	1
42	HRH24C6416	Cable	铰链	1
43	A24K6-40901	Hinge	螺栓	2
43	H24C6-42511	Bolt	垫圈6	2
44	A24K6-42411	Washer	垫圈6	2
45	B5050-00006	Washer	螺母M6	2
46	B5310-00006	Nut	衬套	2
47	B4123-00006	Bushing	电瓶固定支架	2
48	A24K6-42421	Bracket	螺杆	1
49	E33D6-40309	Rod	螺母M6	1
50	23652-42041G	Nut	垫圈6	1
51	B4910-00006	Washer	隔热垫	1
52	B5310-00006	Seal	后底板总成	1
53	H93C6-42711	Floor board	前底板总成	1
54	HRH24C6512	Floor board	前底板总成	1 机械车
55	A95K6-50205		底板垫	1
56	A22A6-52252	Gasket	座椅	1 机械车
57	A23F6-52012	Gasket	螺栓M16X1.5X45	1 液力车

CPC (D) 10/15/18-XC1K/QC1K

CPC (D) 10/15/18-WK

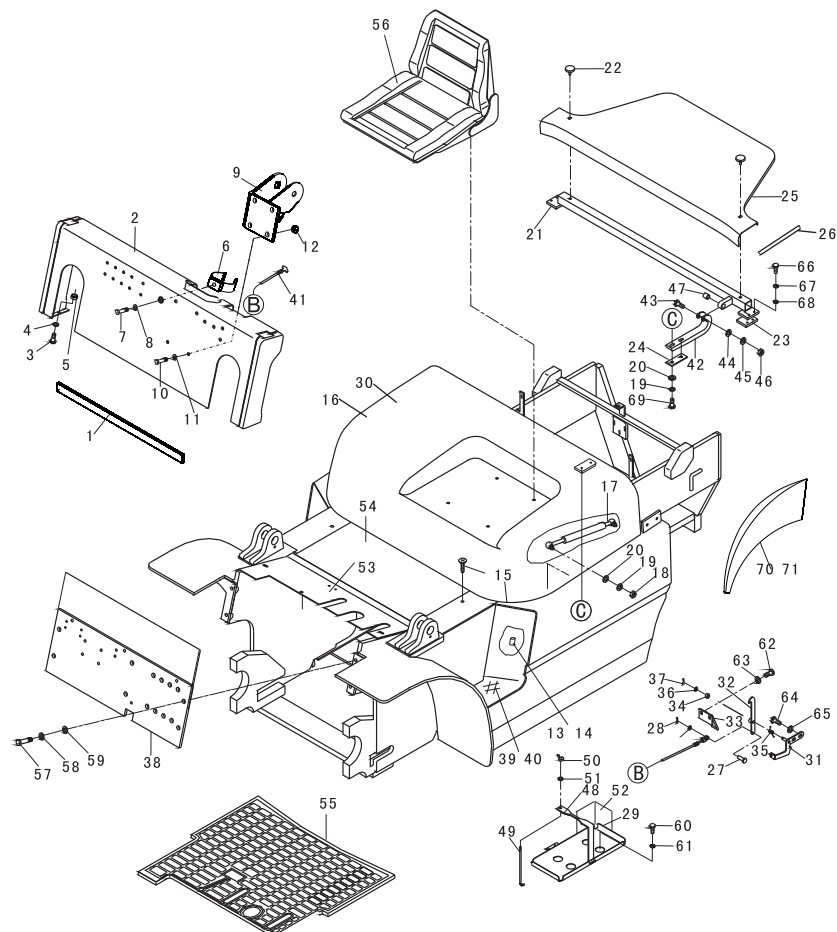
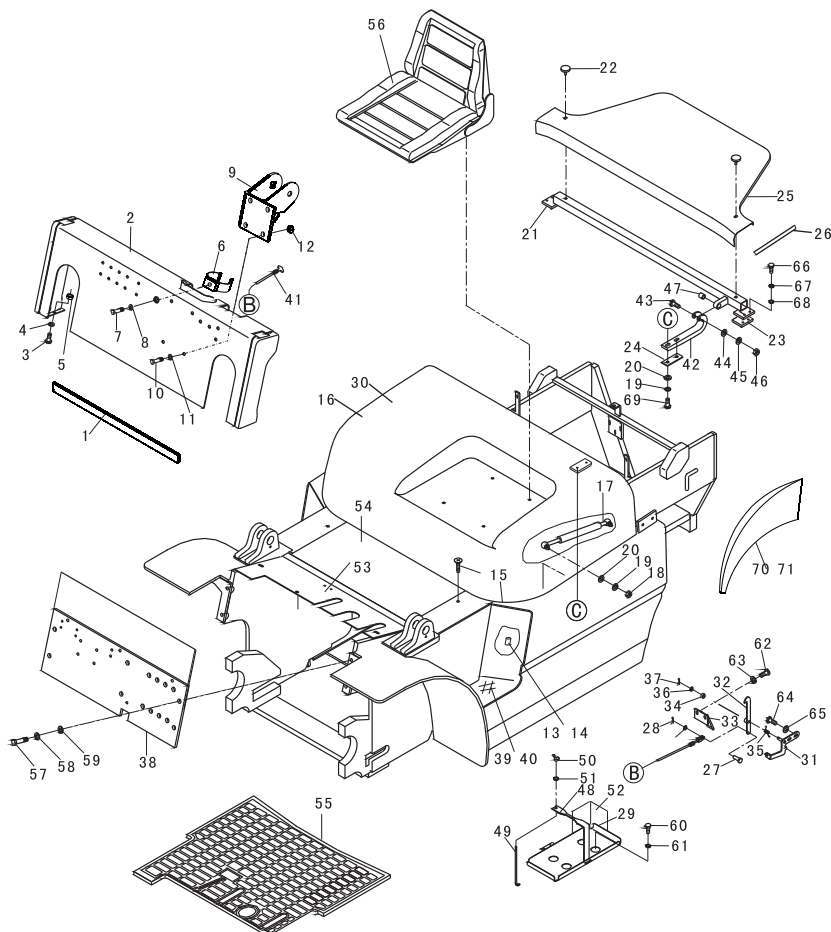


图28/F I G28

[illegible]

CPC(D) 10/15/18-XC1K/QC1K

CPC(D) 10/15/18-WK

序号 Item No	图 号 Part No	零部件名称 Description	件数 Q'ty	备 注 Remark
01	23655-22201a	Pedal unit 油门踏板总成	1	
02	B4533-00012	Nut 螺母M12X1.25	1	
03	25785-22111	Bolt 螺栓	1	
04	22495-22000	Link 压杆	1	
05	22495-23000	Link, ass'y 摇臂总成	1	
06	25785-22031	Spring 弹簧	1	
07	22495-25000	Bracket 支架	1	用于液力车
	22495-24000	Bracket 支架	1	用于机械车
08	B3010-3P216	Pin 销3.2X16	1	
09	B5310-00008	Washer 垫圈8	1	
10	B3010-02010	Pin 销2X10	4	
11	B5710-00006	Washer 垫圈6	6	
12	A97A5-22001	Rod 拉杆	1	
13	3C53-00-09	Yoke 耳子	1	
14	20065-22000G	Pin 钢丝绳固定销	1	
15	3C53-00-08	Bracket 钢丝绳固定架	1	
16	3C53-00-06	Bat 钢丝绳固定板	1	
17	B1110-04010	Screw 螺钉M4X10	1	
18	B4123-00006	Nut 螺母M6	4	
19	B5050-00006	Washer 垫圈6	3	
20	B1110-06016	Screw 螺钉M6X16	2	
21	20065-23000G	Accelerator 熄火操纵装置	1	
22	B1110-04016	Screw 螺钉M4X16	2	

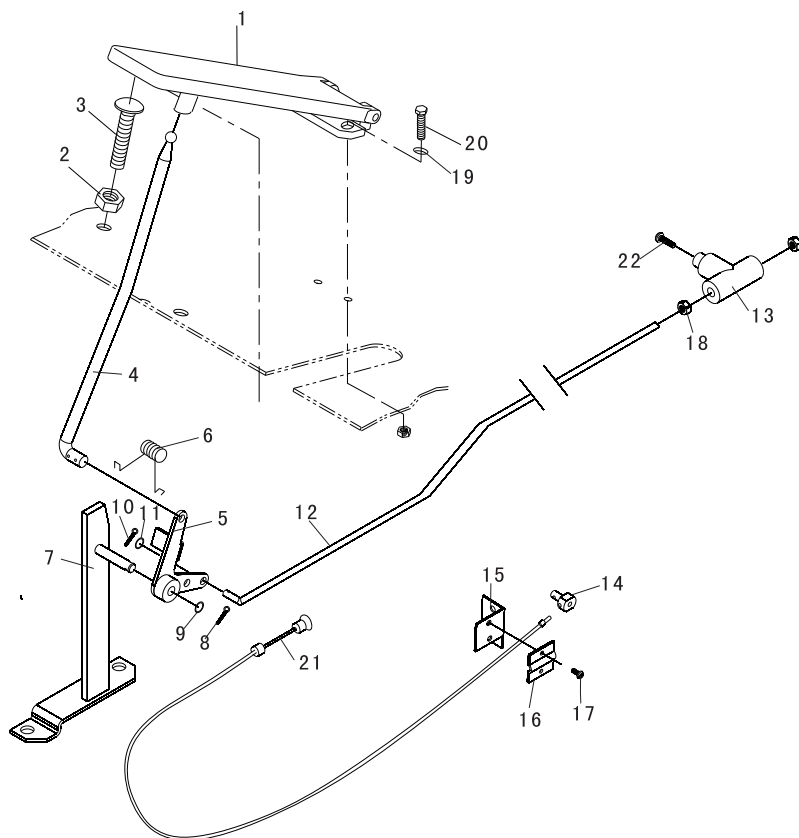


图31/FIG31

油门操纵/ACCELERATOR

序号 Item No	图 号 Part No	版本 Edition	零部件名称 Description	件数 Q'ty	备 注 Remark
01	H24C5-60201	B.2	Accelerator pedal ass'y 踏板总成	1	1
02	H24C5-60201	B.1	Sheave 滚轮	1	1
03	B5310-00006	B.0	Washer 垫圈6	1	1GB97.1-85
04	B3010-02020	B.0	Pin 销2x20	1	1 GB91-86
05	25785-22111	D.1	Bolt 螺栓	1	1
06	B4216-00012	B.0	Nut 螺母M12x1.25	1	1GB6171-86
07	B0330-06020	B.0	Bolt 螺栓M6x20	2	2GB5783-86
08	B4116-00006	B.0	Nut 螺母M6	2	2GB6170-86
09	B5050-00006	B.0	Washer,lock 垫圈6	2	2 GB93-87
10	H24C5-60301	B.1	Link,ass'y 连接轴总成	1	1
11	25785-22031	D.1	Spring 弹簧	1	1
12	B5310-00010	B.0	Washer 垫圈10	1	1GB97.1-85
13	B3010-03020	B.0	Pin,cotter 销3x20	1	1 GB91-86
14	H14S5-60201	B.1	Bracket 支架	1	1
15	B3220-06016	B.0	Pin,clevis 销B6x16	1	1GB882-86
16	B0330-10020	B.0	Bolt 螺栓M10x20	2	2GB5783-86
17	B5050-00010	B.0	Washer,lock 垫圈10	2	2 GB93-87
18	H12C5-60202	B.1	Soft shaft 油门拉索	1	1PCD10,15,18
-	H13C5-60202	B.2	Soft shaft 油门拉索	1	1PCD10,15,18

CPC(D) 10/15/18-WK

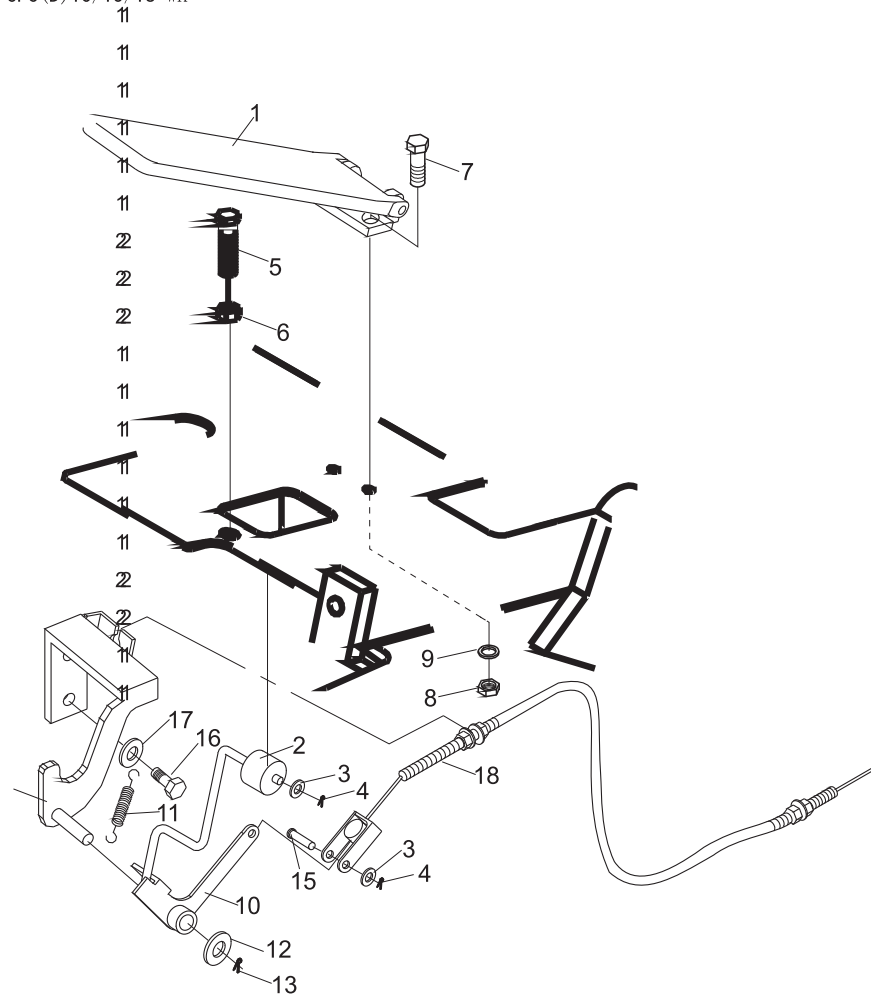


图33/F1G24

行车制动与离合操纵/BRAKE & CLUTCH CONTROL

序号 Item No	图 号 Part No	零部件名称 Description	件数 Q'ty	备 注 Remark
1	B3220-08030	Pin 销B8X30	1	
2	B5310-00008	Washer 垫圈8	1	
3	B3010-3P216	Pin 销3. 2X16	1	
4	23235-40091	Rubber 橡皮顶轴	1	
5	B4223-00010	Nut 螺母M10X1. 25	2	
6	B0530-10035	Bolt 螺栓10X1. 25X35	2	
7	20155-30061	Spring 拉簧	2	
8	B4223-00012	Nut 螺母M12X1. 25	1	
9	22215-30042	Nut 螺母	1	
10	23655-32512	Spring 压簧	1	
11	21235-32031	Rod 分离杆	1	
12	B5310-00010	Washer 垫圈10	1	
13	B3010-3P220	Pin 销3. 2X20	1	
14	24455-30211	Clutch pedal 离合踏板	1	
15	24455-40401G	Hose 油管总成	1	
16	B0330-10030	Bolt 螺栓10X30	4	
17	24455-40501	Bracket 支架	1	
18	24455-40211	Clutch pedal 制动踏板	1	
19	24455-42211	Clip 管夹	1	
20	24457-60020G	Rubber 橡胶套	2	
21	24455-40301G	Pipe 油管总成	1	
22	24455-42251	Clip 管夹	1	
23	B0330-10035	Bolt 螺栓M10X35	2	
24	B4123-00010	Nut 螺母M10	2	
25	B5050-00010	Washer 垫圈10	6	
26	25595-40302	Mast cylinder 制动总泵	1	
27	Z4590-00016	Clip 双钢丝紧箍 $\Phi 16$	2	
28	Z7500-10100	Hose 液压制动胶管9. 5 L=1000	1	
29	25595-42071	Head cover 踏板垫	2	
30	23775-42102	Tank reserve 储油罐	1	

CPC (D) 10/15/18-XC1K/QC1K

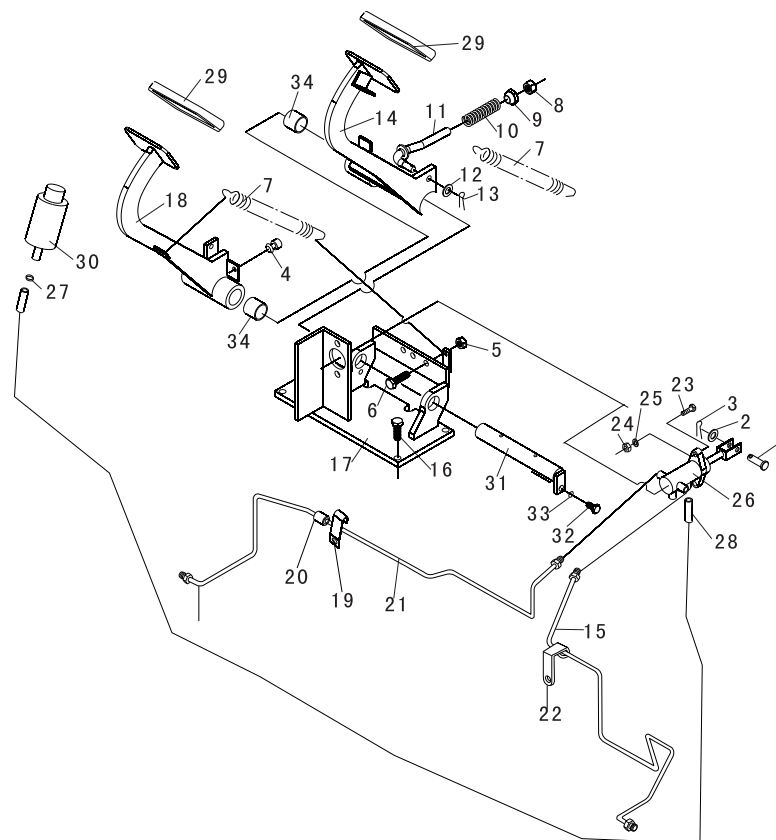


图34/F1G34

行车制动与微动操纵/BRAKE & INCHING CONTROL

序号 Item No	图 号 Part No	零部件名称 Description	件数 Q'ty	备 注 Remark
1	A01D5-41101	Mast cylinder	制动总泵	1
2	B5310-00016	Washer	垫圈16	1
3	B3010-04026	Pin	销4x26	1
4	B3220-10032	Pin	销B10x32	2
5	B5310-00010	Washer	垫圈10	2
6	B3010-3P220	Pin	销3.2x20	2
7	REF339703	Clevis	支耳	2
8	B0530-10020	Bolt	螺栓M10x1.25x20	2
9	B5050-00010	Washer	垫圈10	2
10	B5310-00008	Washer	垫圈8	3
11	B3010-02016	Pin	销2x16	3
12	B3220-08030	Pin	销B8x30	1
13	22505-42001	Link	连接杆	1
14	23745-42031	Rod	螺杆	1
15	B4123-00010	Nut	螺母M10	1
16	24465-40311	Clutch pedal	微动踏板	1
17	A03M5-40201	Hose	油管总成	1
18	23235-40091	Rubber	橡皮顶轴	1
19	B0110-10025	Bolt	螺栓M10x25	2
20	B0110-08016	Bolt	螺栓M8x16	1
21	B5050-00008	Washer	垫圈8	1
22	20155-30061	Spring	拉簧	2
23	A03M5-40301	Clutch pedal	制动踏板	1
24	A03M5-40401	Hose	油管总成	1
25	B0110-10020	Bolt	螺栓M10x20	2
26	B3220-10026	Pin	销B10x26	1
27	24455-42211G	Clip	管夹	2
28	24245-42201	Clip	管夹	1
29	24245-42301	Clip	管夹	1
30	B0530-10045	Bolt	螺栓M10x1.25x45	1

CPC(D) 10/15/18-XC1K/QC1K
CPCD10/15/18-WK

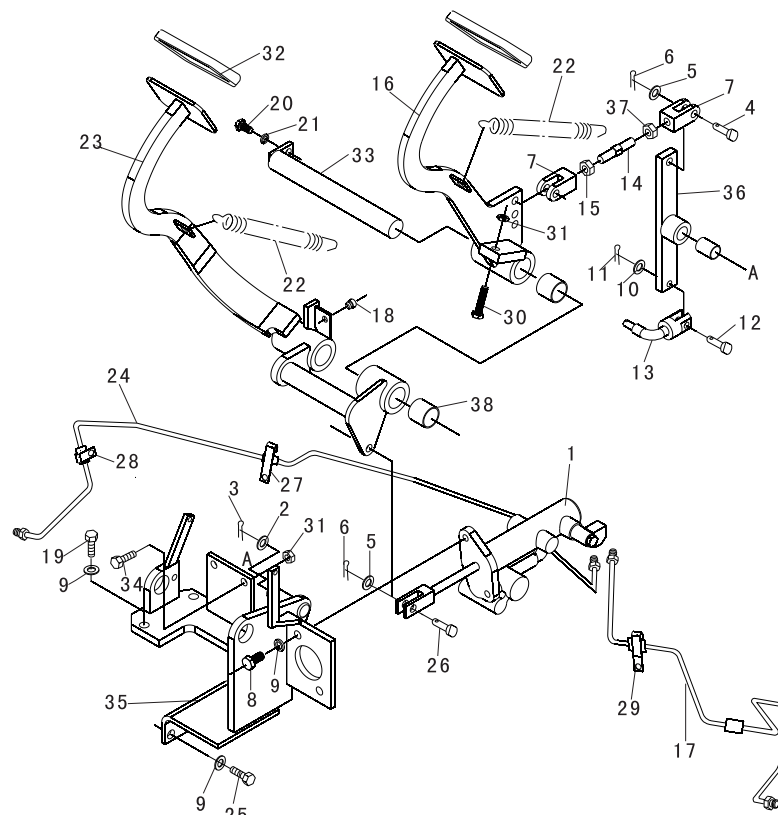


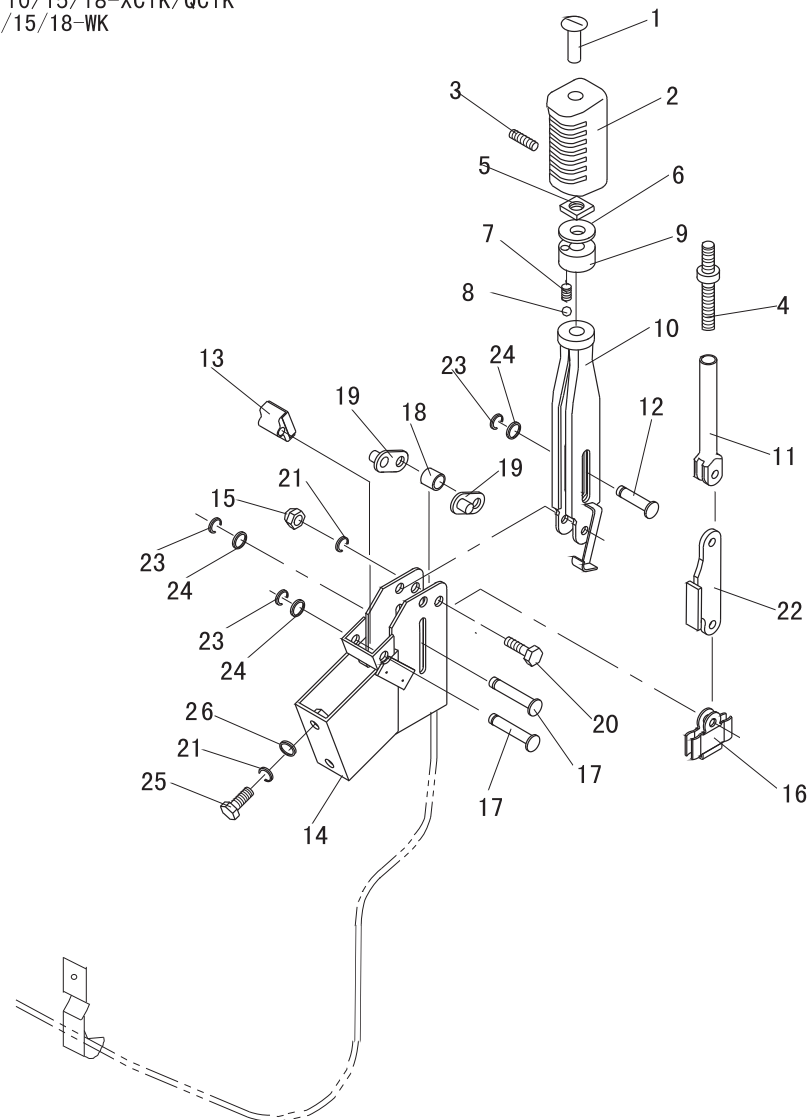
图35/F1G35

停车制动装置/BRAKE LEVER

F1

序号 Item No	图 号 Part No	零部件名称 Description	件数 Q'ty	备 注 Remark
1	THN-111	Over head 调节杆	1	
2	THN-110	Grip 手柄头	1	
3	B1830-04004	Screw 内六角凸端紧定螺钉M4X3.7	1	
4	THN-500	Screw rod 螺杆	1	
5	B7810-00008	Nut 方螺母M8	1	
6	B5210-00008	Washer 大垫圈8	1	
7	THN-200	Spring 弹簧1X5.5X10.8	1	
8	GB308-64	Ball 钢球Φ6	1	
9	THN-101	Seat 手柄座	1	
10	THN-060	Lever 闸把体	1	
11	THN-600	Rod 拉杆体	1	
12	THN-070	Pin 平头销d8x35	1	
13	THN-098A	Stopper 限位块	1	
14	THN-050	Bracket 支架总成	1	
15	B4732-00010	Nut 组合式盖形螺母M10	1	
16	21235-52171G	Bracket 挂线板	1	
17	THN-070	Pin 平头销d8x45	1	
18	25785-52261	Washer 垫圈II	1	
19	THN-40-00	Plate 支撑板总成	2	
20	B0220-10045	Bolt 螺栓M10X45	1	
21	B5050-00010	Washer, lock 垫圈10	3	
22	THN-900-00	Link 拉板总成	1	
23	B6250-00008	Washer 垫圈8	3	
24	B5310-00008	Washer 垫圈8	6	
25	B0220-10040	Bolt 螺栓M10X40	2	
26	B5310-00010	Washer 垫圈10	2	

CPC (D) 10/15/18-XC1K/QC1K
CPCD10/15/18-WK



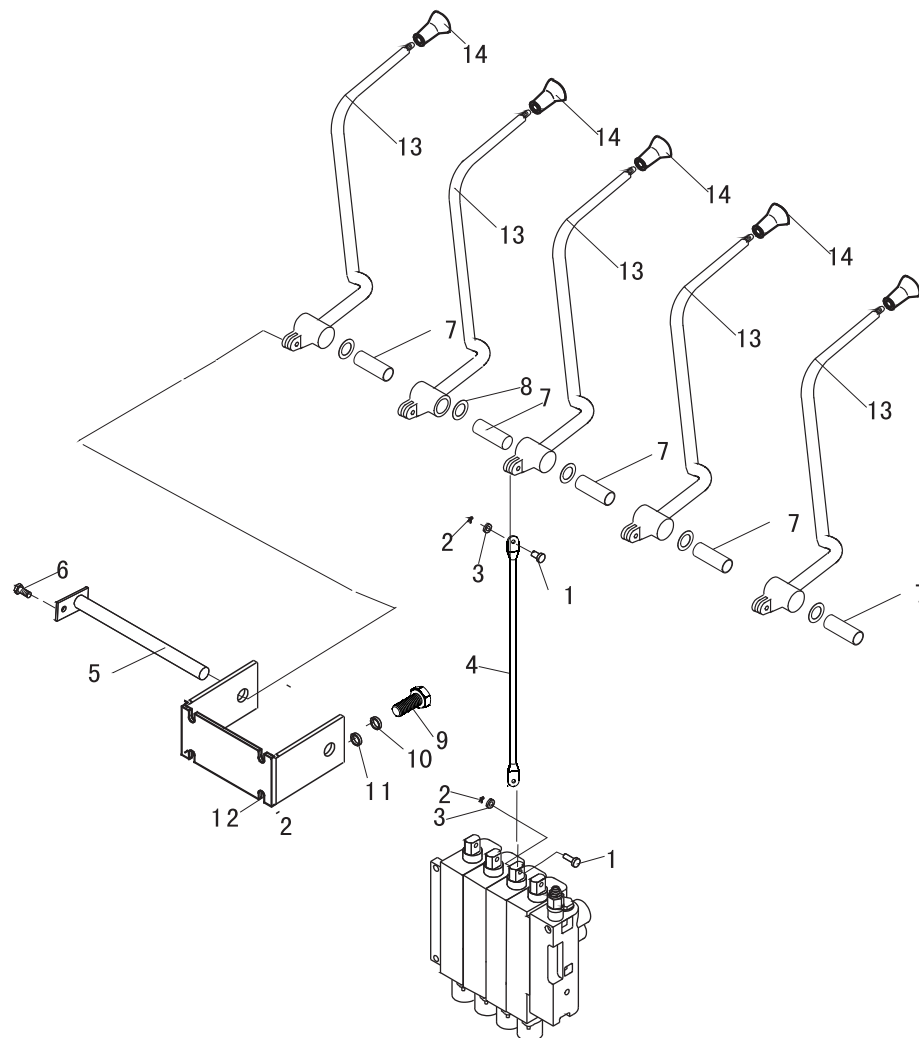
HELI

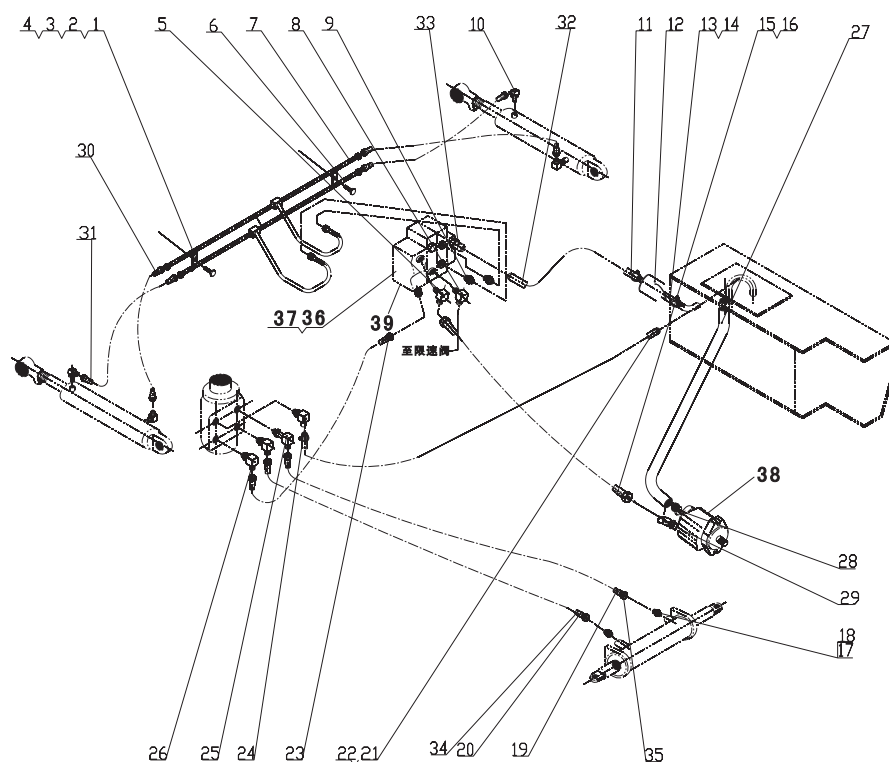
图 39/F I G 39

阀操纵总成（五片）/VALVE CONTROL LINKAGE（FIVE-THROW）

[illegible]

CPC (D) 10/15/18-XC1K/QC1K
CPCD10/15/18-WK



CPC(D) 10/15/18-XC1K/QC1K
 CPCD10/15/18-WK


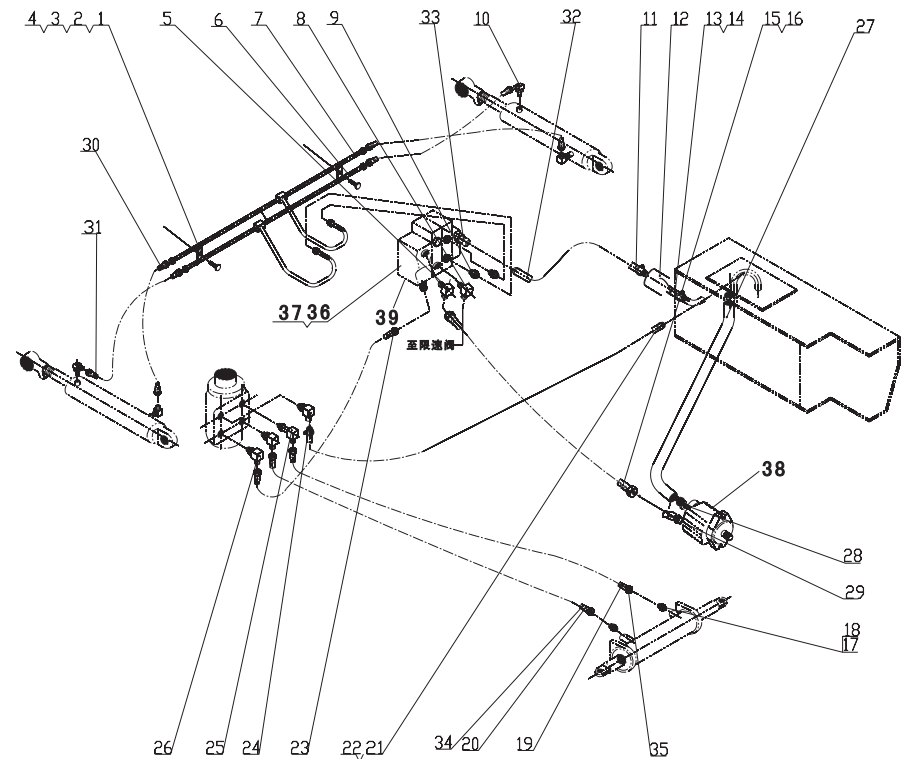
序号 Item No	图 号 Part No	零部件名称 Description	件数 Q'ty	备 注 Remark
1	23687-60030G	Clip 管夹	2	
2	24457-60020G	Rubber 橡胶套	4	
3	B0110-06025	Bolt 螺栓M6X25	4	
4	B5050-00006	Washer 垫圈6	4	
5	JT6022-22061	Elbow 直角接头	1	
5-1	AJ6022-22041	Body 接头体	1	
5-2	23657-63551G	Shim 垫片	1	
5-3	23657-63110G	Nut 螺母	1	
5-4	Z6003-02402	O-ring 0型密封圈24X2.4	1	
6	X81E7-60301	Pipe 倾斜缸钢管(后)	1	
7	X81E7-60201	Pipe 倾斜缸钢管(前)	1	
8	JT6022-22011	Elbow 直角接头	1	
8-1	JT6026-22021	Body 接头体	1	
8-2	Z6003-02202	O-ring 0型密封圈22X2.4	1	
8-3	25177-63030G	Shim 垫片	1	
8-4	25177-63020G	Nut 螺母	1	
9	JT6021-20021	Connector 直通接头	2	
9-1	JT6025-20071	Connector 直通接头	2	
9-2	Z6003-02202	O-ring 0型密封圈22X2.4	2	
10	JT7022-14021	Elbow 直角接头	2	
10-1	JT7026-14021	Body 直角接头体	2	
10-2	Z6003-01502	O-ring 0型密封圈15X2.4	2	
10-3	A22A7-62031	Shim 垫片	2	
10-4	A22A7-62041	Nut 螺母	2	
11	HRX81E7601	Pipe 多路阀回油管	1	
12		Oil filter 滤油器	无	
13		Hose L. P 低压胶管	1	
14	Z4590-00045	Clip 双钢丝紧箍Φ45	6	
15	Z9502-13117	Hose H. P 高压胶管	1	
16	21197-60130	Rubber 橡胶套	3	

图40/FIG40

液压系统/HYDRAULIC SYSTEM

序号 Item No	图 号 Part No	零部件名称 Description	件数 Q'ty	备 注 Remark
17	A22A7-60601	Body 直通接头体	2	
18	Z6003-01802	O-ring 0型密封圈18X2.4	2	
19	Z9501-08155	Hose H.P 高压胶管	1	
20	Z9501-08135	Hose H.P 高压胶管	1	
21	Z7351-13140	Hose L.P 低压胶管 ϕ 13X1400	1	
22	Z4590-00023	Clip 双钢丝紧箍 ϕ 23	2	
23	A12A7-60401	Hose H.P 高压胶管	1	
24	JT6022-22041	Elbow 直角接头	1	
24-1	A20A7-62442	Body 接头体	1	
24-2	25177-63030G	Shim 垫片	1	
24-3	25177-63020G	Nut 螺母	1	
24-4	Z6003-02202	O-ring 0型密封圈22X2.4	1	
25	JT6022-20031	Elbow 直角接头	1	两片阀用
			2	三片阀用
			3	四片阀用
			4	五片阀用
25-1	A20A7-62692	Body 接头体	1	两片阀用
			2	三片阀用
			3	四片阀用
			4	五片阀用
25-2	25177-63030G	Shim 垫片	1	两片阀用
			2	三片阀用
			3	四片阀用
			4	五片阀用
25-3	25177-63020G	Nut 螺母	1	两片阀用
			2	三片阀用
			3	四片阀用
			4	五片阀用
25-4	Z6003-02202	O-ring 0型密封圈22X2.4	1	两片阀用
			2	三片阀用

CPC (D) 10/15/18-XC1K/QC1K
CPCD10/15/18-WK



CPC(D) 10/15/18-XC1K/QC1K
 CPCD10/15/18-WK

序号 Item No	图 号 Part No	零部件名称 Description	件数 Q'ty	备 注 Remark
25-4	Z6003-02202	O-ring 0型密封圈22X2.4	3	四片阀用
			4	五片阀用
26	JT6022-20051	Elbow 直角接头	1	两片阀用
			2	三片阀用
			3	四片阀用
			4	五片阀用
26-1	JT7026-14021	Body 接头体	1	两片阀用
			2	三片阀用
			3	四片阀用
			4	五片阀用
26-2	A22A7-62031	Shim 垫片	1	两片阀用
			2	三片阀用
			3	四片阀用
			4	五片阀用
26-3	A22A7-62041	Nut 螺母	1	两片阀用
			2	三片阀用
			3	四片阀用
			4	五片阀用
26-4	Z6003-01502	O-ring 0型密封圈15X2.4	1	两片阀用
			2	三片阀用
			3	四片阀用
			4	五片阀用
27	X81E7-62031	Hose L. P 吸油管	1	
28	H24C7-60301	Connector 直通接头	1	
28-1	Z6051-02202	O-ring 0型密封圈22X2.4	1	
28-2	H24C7-62021	Body 直通接头体	1	
29	H24C7-60301	Connector 油泵接头	1	
29-1	H24C7-62011	Nut 螺母	1	
29-2	25177-63030G	Shim 垫片	1	
29-3	Z6003-02202	O-ring 0型密封圈22X2.4	1	

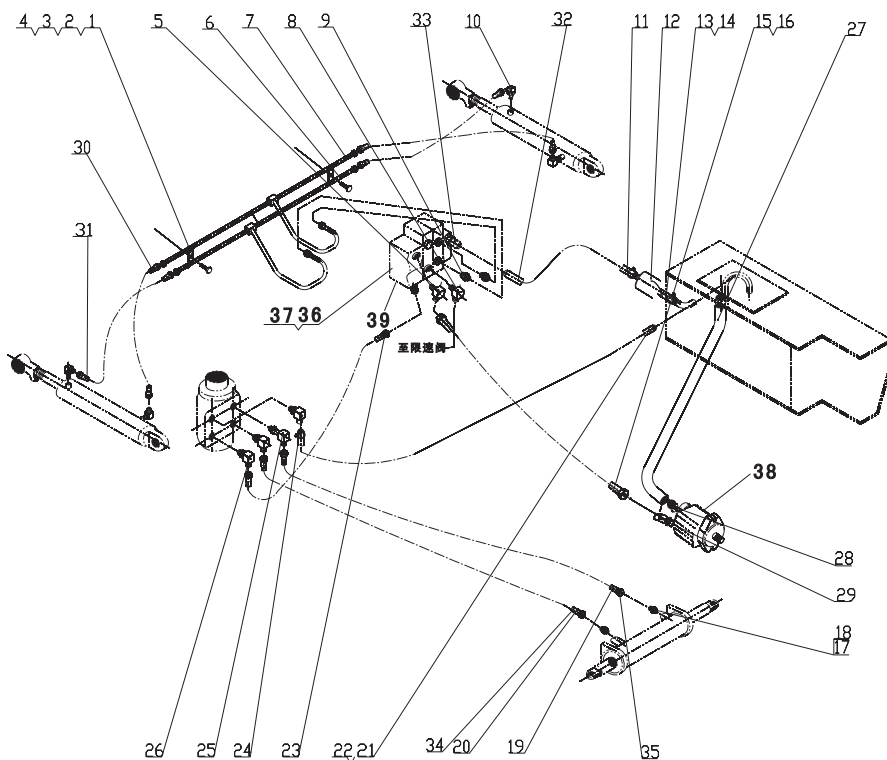
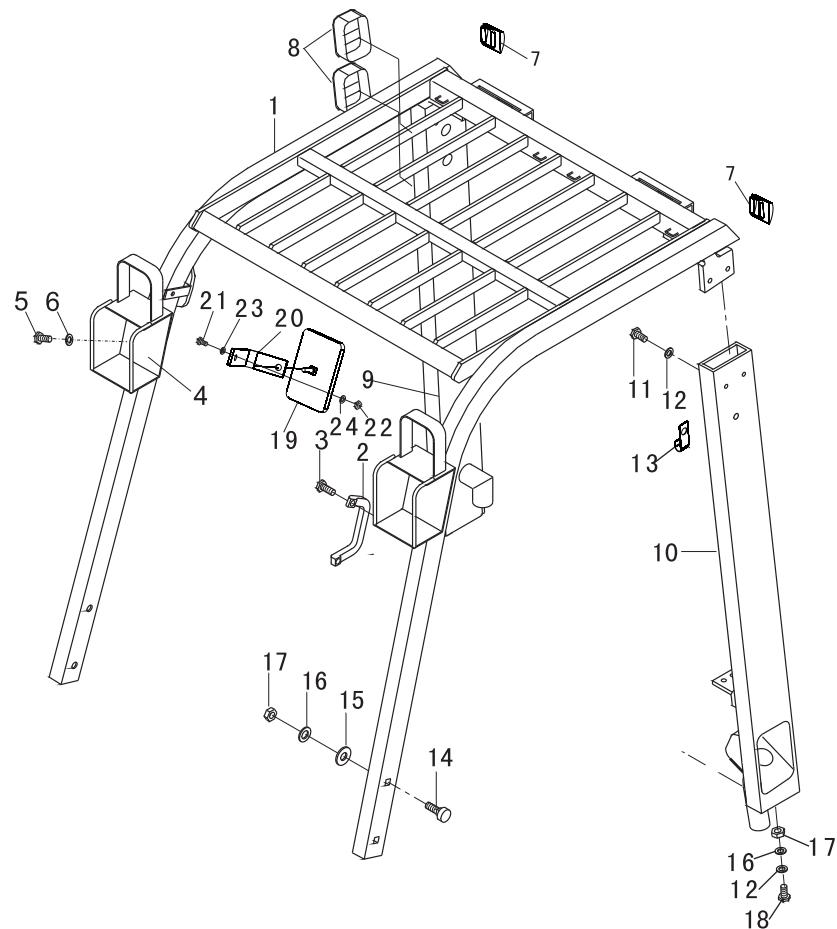


图41/FIG41

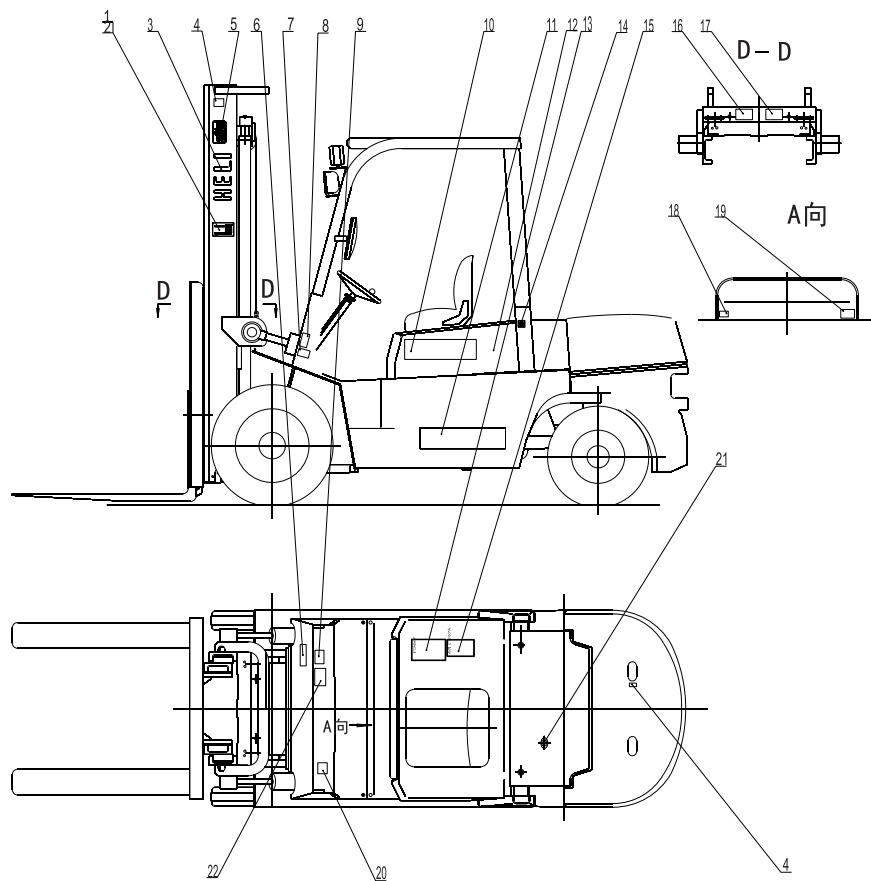
护顶架/OVERHEAD GUARD

序号 Item No	图 号 Part No	零部件名称 Description	件数 Q'ty	备 注 Remark
1	K87A5-10101	Overhead guard 框架总成	1	
2	A22A5-10412G	Handle, grip 把手总成	1	
3	B8030-06025	Screw 螺钉M6X25	2	
4	AF935-12611S	Guard, lamp F 前灯架总成	2	
5	B0330-08016	Bolt 螺栓M8X16	6	
6	B5050-00008	Washer 垫圈8	6	
7	H24C5-12913	Cup 边管罩	2	
8	H24C5-12953	Cover 进气罩	2	
9	K87A5-10501	Rear pump R.H 后支撑杆总成(右)	1	
10	K87A5-10701	Rear pump L.H 后支撑杆总成(左)	1	
11	B0530-12030	Bolt 螺栓M12X1.25X30	6	
12	B5310-00012	Washer 垫圈12	10	
13	H24C5-12941	Clip 后灯线卡	1	
14	H24C5-12922	Bolt 螺栓	4	
15	27354-12341	Shim 垫圈	4	
16	B5050-00012	Washer 垫圈12	10	
17	B4223-00012	Nut 螺母M12X1.25	10	
18	A95J5-12145	Bolt 螺杆	4	
19	DK649A	Back mirror 倒车镜总成	1	
20	A22A0-02011	Bracket 倒车镜支架	1	
21	B0230-08050	Bolt 螺栓M8X50	1	
22	B4123-00008	Nut 螺母M8	1	
23	B5050-00008	Washer 垫圈8	1	
24	B5310-00008	Washer 垫圈8	1	

CPC(D) 10/15/18-XC1K/QC1K
CPCD10/15/18-WK



CPC(D)10/15/18-XC1K/QC1K
CPCD10/15/18-WK



序号 Item No	图 号 Part No	零部件名称 Description	件数 Q'ty	备 注 Remark
1	6TY10-00-193	Name plate 实际承载能力铭牌	1	
2	B2180-03006	Rivet 铆钉3X6	8	
3	6TY40-00-398	Decal HELI 标牌	2	
4	6TY40-10-08	Decal 起吊标牌	1	
5	6TY40-01-08	Decal 安全标志标牌	3	
6	6TY40-02-29	Decal 润滑系统图标牌	2	
7	6TY40-16-36	Decal 轮胎气压	1	
8	6TY40-08-07	Decal 轮胎安全标牌	1	
9	X81A9-12011	Decal 型号标牌	2	
10	6TY40-11-01	Decal 合力叉车标牌	2	
11	6TY40-07-07	Decal 风扇安全标牌	1	
12	6TY40-03-22	Decal 使用须知标牌	1	
13	6TY40-04-08	Decal 燃油标牌	1	
14	6TY40-14-06	Decal 禁止进入门架后空间标牌	1	
15	6TY40-15-08	Decal 注意伤手标牌	1	
16	6TY40-05-07	Decal 加液压油标牌	1	
17	X81A9-12001	Decal 容量标牌	1	
18	6TY40-13-09	Decal 停车制动调整标牌	1	
19	6TY40-09-07	Decal 加防冻液标牌	1	
20	6TY40-00-86	Decal 叉式装卸车铭牌	1	

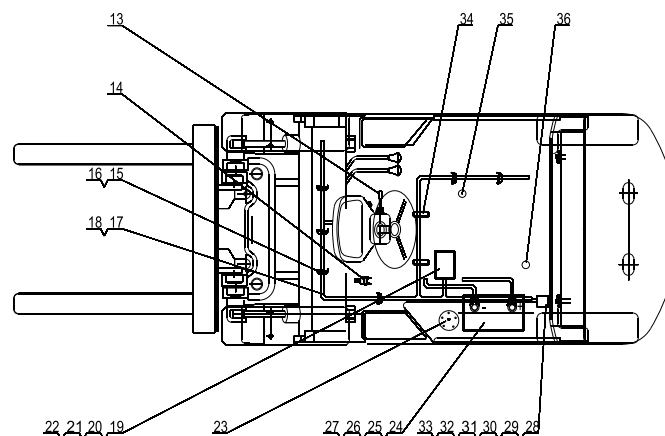
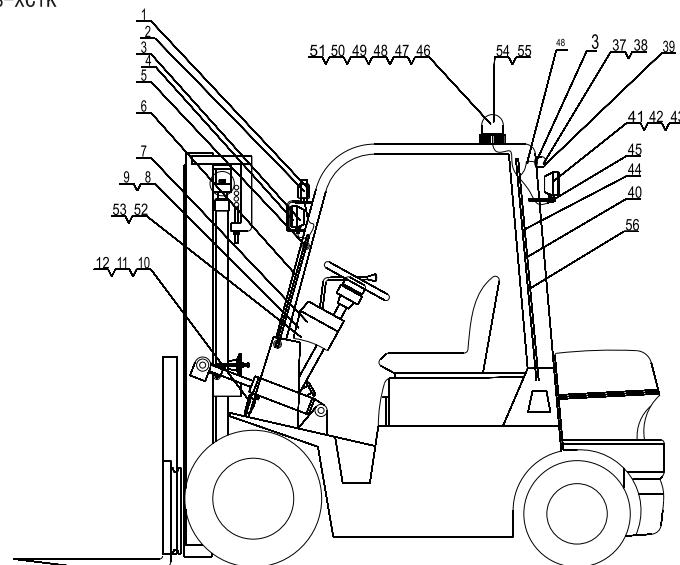
图43/FIG43

电气系统/ELECTRIC SYSTEM

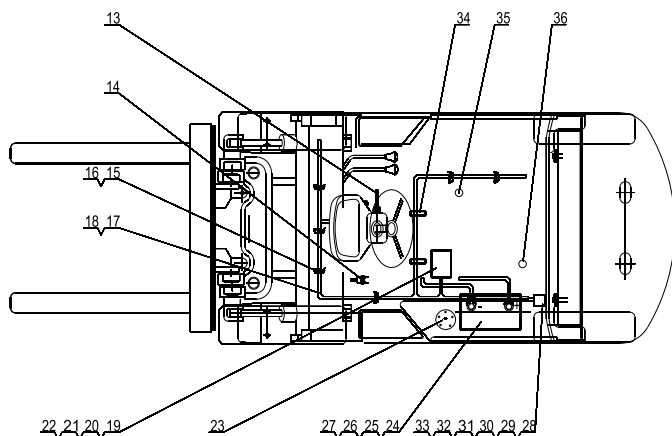
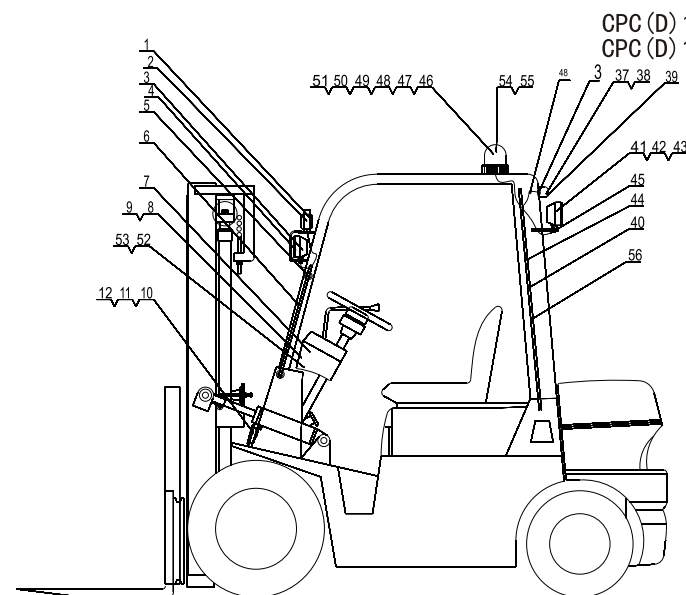
序号 Item No	图 号 Part No	零部件名称 Description	件数 Q'ty	备 注 Remark
01	Z8600-121WD-LED	LED head lamp LED前大灯	2	选装
02	Z8610-12000-LED	LED head lamp LED前组合灯	2	选装
03	Z8610-12000	Head lamp 前组合灯	2	12V
04	Z8610-121WD	Head lamp 前大灯	2	12V
05	A22A2-40260x3	Rubber circle 出线胶圈	4	
06	23652-42071GS	Head guard harness 前大灯线束	2	
07	D04ZB909TE-X	Meter panel ass'y 组合仪表	1	
08	D04ZB909TE-X1	Meter panel ass'y 组合仪表	1	
09	A22A2-40260x3	Rubber circle 出线胶圈	2	
10	Z8500-1D124	Horn 电喇叭	1	
11	B0110-08016	Bolt 螺栓M8x16	1	GB5781-86
12	B5050-00008	Washer 垫圈8	1	GB93-87
13	Z8730-0802A	Switch turn signal 转向灯开关	1	
14	Z8740-JK205	Switch of stop 刹车灯开关	1	Jk205
15	Z9260-30100	Gea 扎带	8	3x100
16	H24C2-42131	Sprial bevel gea固定可松开式锁式扎带	20	
17	K83A2-40301	Harness 车身线束	1	
18	HRK9GA2411	Harness 电气接线图	1	
19	D03JCDQ012A	Box 集成电器盒	1	
20	B1210-06012	Screw 螺钉M6x12	4	GB818-85
21	B5050-00006	Washer 垫圈6	4	GB93-87
22	B5111-00006	Washer 垫圈6	4	GB95-85
23	K87A2-42011	Oil sensor 油量传感器	1	
24	D016-QW-80S	Battery 蓄电池	1	
25	A22A2-40900	Link wire 易熔丝	1	
26	A91A2-40500	Cable 电瓶引线+	1	W118-6
27	A22A2-40400	Cable 电瓶引线-	1	W118-6
28	Z8510-120DZ	Reverse buzzer 倒车蜂鸣器	1	DJB-12B
29	D06DCD21-12V	Rear lamp harness 语音倒车蜂鸣器	1	选装件
30	B1210-06016	Rear lamp ass'y 螺钉M6x16	1	GB818-85

CPC (D) 10-18-XC1K

CPC (D) 10-18-XC1K



HELI



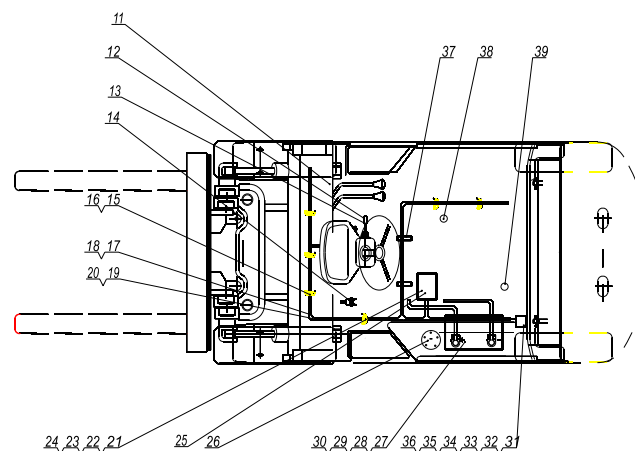
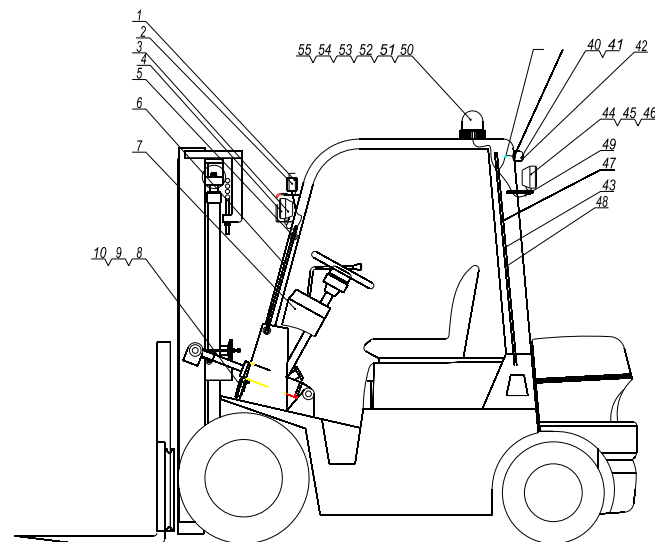
序号 Item No	图 号 Part No	零部件名称 Description	件数 Q'ty	备 注 Remark
31	B5050-00006	Washer	垫圈6	1 GB93-87
32	B4123-00006	Nut	螺母6	1 GB6170-86
33	B5111-00006	Washer	垫圈6	1 GB95-85
34	HRH92A2401	Bracket	电瓶引线卡	2 W3-17
35	Z8770-82210S	Oil press switch	油压报警开关	1 发动机自带
36	Z8411-12703	Water temp sensor	水温传感器	1 发动机自带
37	Z8620-12000	Rear lamp ass'y	组合尾灯	2
38	A22A2-42000a	Rear lamp shim	后组合灯垫	2
39	Z8620-12000-LED	LED rear lamp ass'y	LED后组合灯	2 选装件
40	H24C2-40231S	Rear lamp harness	后护顶架线束	1
41	Z8600-120WD	Head lamp	前大灯	1 选装件
42	Z8600-120WD-LED	LED head lamp	LED前大灯	1 选装件
43	D09JK211	Switch	灯开关	1 选装件
44	AF932-40501S	Work lamp harness	后工作灯线束	1 选装件
45	E19M5-10231S	Rear lamp support	后工作灯支架	1 选装件
46	H24C2-40491	lamp	警示灯	1 选装件
47	H2MD2-44201	LED lamp	LED闪光式警示灯	1 选装件
48	H24C2-40492S	Lamp	警示灯	1 选装件
49	K87A2-40401	Harness	警示灯线束	1 选装件
50	XH9-3MJ	Lamp	警示灯	1 选装件
51	D09JK211J	Switch	警示灯开关	1 选装件
52	D04ZB909TE-XWZ	Meter panel ass'y	组合仪表	1 选装件 中性包装
53	D04ZB909TE-X1WZ	Meter panel ass'y	组合仪表	1 选装件 中心包装
54	H2MD2-44301	LED lamp	LED旋转警示灯	1 选装件
55	H2MD2-44401	LED lamp	LED旋转蜂鸣警示灯	1 选装件
56	AF932-40701	Harness	后灯过渡线	2 选装件

图43/FIG43

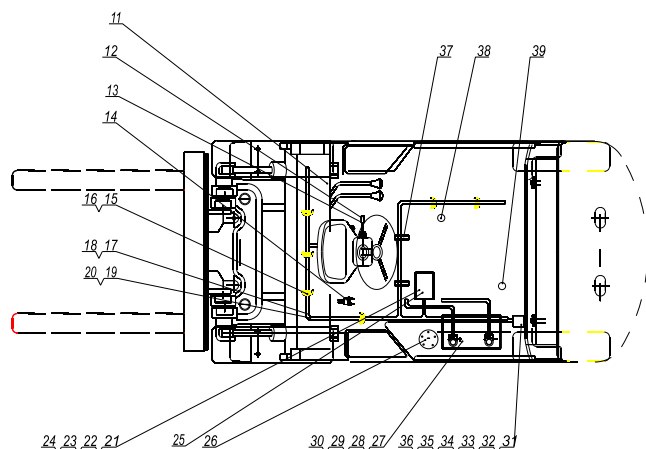
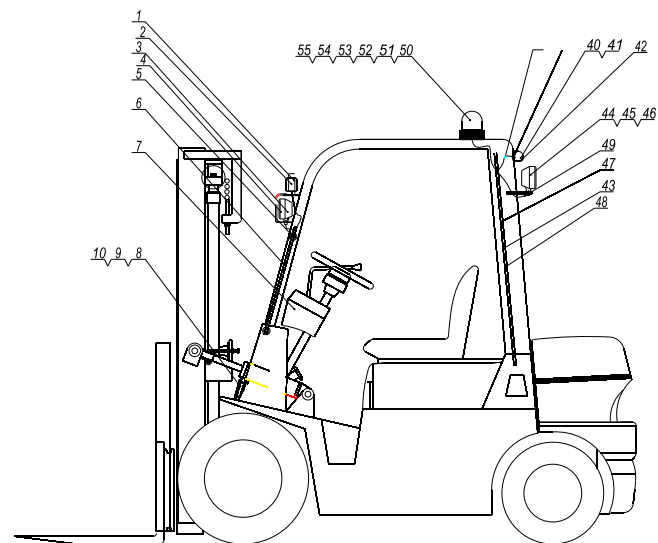
电气系统/ELECTRIC SYSTEM

序号 Item No	图 号 Part No	零部件名称 Description	件数 Q'ty	备 注 Remark
01	Z8610-12000	Front combination lamp assy 前组合灯	2	
02	Z8610-12000-LED	Front combination lamp assy LED前组合灯	2	选用件
03	Z8610-121WD	Head lamp ass'y 前大灯	2	
04	Z8610-121WD-LED	Head lamp ass'y LED前大灯	2	
05	A22A2-40260-3S	Rubber ring 出线胶圈	6	
06	Z3652-42071GS	Cable, head lamp 前大灯线束	1	
07	K11B2-40501	Combination 组合仪表	1	
08	Z8500-1D124	Horn 电喇叭	1	
09	B0110-08016	Bolt 螺栓M8X16	1	
10	B5050-00008	Washer 垫圈8	1	
11	D09JK211	Direction 灯开关	1	
12	Z8730-0802A	Switch, turn signal 转向灯开关	1	
13	D09JK806AA-HC	Switch 组合开关	1	
14	Z8740-JK205	Switch 刹车灯开关	1	
15	Z9260-30100	Belt cilp 扎带	8	
16	H24C2-42131	Belt cilp 固定可松开式扎带	20	
17	K11B2-40301	harness 车身线束	1	
18	K11B2-40302	Cabinet harness 仪表线束	1	
19	K11B2-40201	电气接线图	1	
20	K11B2-40202	电气接线图	1	电液换向
21	AF932-40401S	Box 集成电器盒	1	
22	B1210-06012	Screw 螺钉M6X12	4	
23	B5050-00006	Washer 垫圈6	4	
24	B5111-00006	Washer 垫圈6	4	
25	D03HCKJ012	Box 中央控制盒	1	
26	K87A2-42011	Fule level sending unit 油量传感器	1	
27	D016-QW-800S	Battery 蓄电池	1	
28	A22A2-40900	Fusible link wire 易熔丝	1	
29	K11B2-40601	Cable 电瓶引线(+)	1	
30	K11B2-40701	Cable 电瓶引线(-)	1	

OPC (D) 10/15/18-WK



CPC (D) 10/15/18-WK



序号 Item No	图 号 Part No	零部件名称 Description	件数 Q'ty	备 注 Remark
31	Z8510-120D7	Back buzzer 倒车蜂鸣器	1	
32	D06DCD21-12V	Back buzzerr 语音倒车蜂鸣器	1	选用件
33	B1210-06016	Screw 螺钉M6X16	1	
34	B5050-00006	Braking light 垫圈6	1	
35	B4123-00006	Washer		
36	B5111-00006	Washer 垫圈6	1	
37	HRH92A2401	Cable 电瓶引线卡	2	
38	Z8770-82210S	oil pressure switch 油压报警开关	1	
39	Z8411-12703	Water temp sending unit 水温传感器	1	
40	Z8620-12000	Real combination lamp 组合尾灯	2	
41	A22A2-42000a	Mat 后组合灯垫	2	
42	Z8620-12000-LED	LED Real combination lamp LED后组合灯	2	选用件
43	H24C2-40231S	Realhead guard harness 后护顶架线束	2	
44	Z8600-120WD	Head lamp 前大灯	1	
45	Z8600-120WD-LED	Head lamp LED前大灯	1	选用件
46	D09JK211	Switch 灯开关	1	
47	AF932-40501S	Real combination lamp harness 后工作灯线束	1	选用件
48				
49	E19M5-10231S	Real lamp support 后工作灯支架	1	选用件
50	H24C2-40491	Caution light 警示灯	1	选用件
51	XH9-3MJ-LED	Caution light LED闪光警示灯	1	选用件
52	H24C2-40492S	Caution light 警示灯	1	选用件
53	H24C2-40432	Wire harness, caution light 警示灯线束	1	选用件
54	XH9-3MJ	Caution light 警示灯	1	选用件
55	D09JK211J	Light switch 警示灯开关	1	选用件